



# LOGIQ E10

Empowering You to Make the Difference



Enabling OB/GYN Imaging



# EXTRAORDINARY IMAGE QUALITY TO CAPTURE CRITICAL DETAILS

## Clinical challenge

Time is an issue when investigating gynecological conditions and assessing fetal health. It can be difficult to visualize small details clearly and quickly to minimize patient stress and optimize diagnostic confidence.

## GE solution

The LOGIQ™ E10 system is an extraordinary choice for OB/GYN imaging. High quality images provide the clarity and detail to support definitive diagnoses, while workflow tools help shorten exam times and enhance patient comfort.

## Confident diagnosis

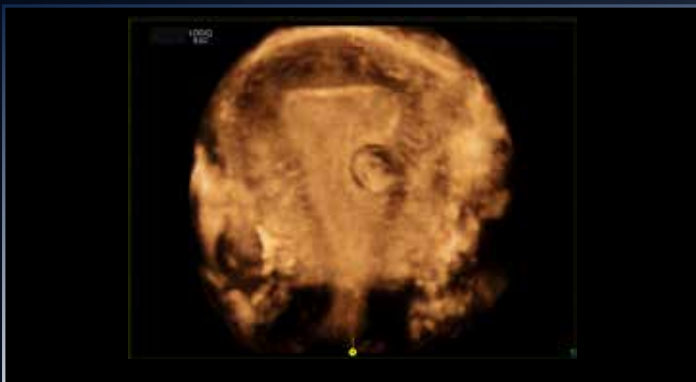
The LOGIQ E10 enables clinicians to acquire images of next-generation quality across a broad range of OB/GYN applications. In obstetrics, it's well-suited for early diagnostics and fetal health imaging, including fetal heart studies. In gynecology, it provides quick answers in routine and emergent cases from pre-menses to post-menopause, with tools to investigate congenital abnormalities and IUCD placement.



**Auto-optimized images:** The next-generation cSound™ Imageformer automatically and continuously delivers top-to-bottom focus with high spatial and contrast resolution. Images of optimal quality are quick and easy to acquire even in challenging clinical scenarios, such as a high BMI patient or highly-active fetus.

**Choice of high-performance probes:** Select from E-Series and XDclear™ probes, including:

- XDclear probes – C1-6-D for outstanding deep resolution and C2-9-D for high-resolution imaging in the abdomen
- Real-time 3D/4D multi-frequency probes – RAB6-D convex and RIC5-9-D micro-convex
- Volume Navigation capabilities with IC5-9-D



Uterus 3D Render VCI OmniView, RIC5-9-D



Ovarian Mass 3D Render with HDlive, RIC5-9-D

# Comprehensive tools

LOGIQ E10 robust tools help clinicians gain a new level of confidence in obstetric and gynecologic exams.

**3D/4D volume imaging** : Enables acquisition of detailed images of fetal and gynecological anatomy within short time frames.

- **OmniView**: Helps improve visualization of structures in any image plane, even irregularly shaped ones such as IUCDs
- **Advanced STIC**: Visualize entire anatomical structures, such as the fetal heart, in one or two heart cycles
- **HDlive™ rendering**: Brings unprecedented anatomical realism to surface, vascular, and internal structures of fetal and female anatomy

**B-Flow™ imaging**: With direct, real-time visualization of blood flow echoes, micro-vessels within the placenta and cord can be seen with exceptional clarity.

**Volume Navigation**: Fuse Ultrasound and MRI data sets for gynecological studies and interventional procedures.

**Strain Elastography**: Enables qualitative tissue assessment.



Cystic Ovarian Mass Visualized with Beta View, RIC5-9-D



## > Concise workflow

LOGIQ E10 automation and ergonomics help reduce exam times and enhance productivity.

**Beta View:** Allows the user to steer the scan plane to any oblique direction, which can result in less manipulation of the probe and added patient comfort.

**Raw Data:** Users can acquire data and apply image processing after the exam, helping to reduce call-backs.

**OB Measure Assistant:** Reduces keystrokes and enhances reproducibility by automating key fetal measurements.

**Exceptional mobility:** With the Power Assistant battery, no re-boot is required when the system is moved from location to location. On-board storage ensures supplies are at hand.

**Tricefy™:** Cloud based solution to share, collaborate and archive ultrasound images and reports securely with colleagues and patients directly from your imaging device.



The cSound Architecture enables the LOGIQ E10 to provide you with confident diagnosis, comprehensive tools and concise workflow. This is an ultrasound system for today and a platform for tomorrow.

### Imagination at work

Product may not be available in all countries and regions. Full product technical specifications is available upon request. Contact a GE Healthcare Representative for more information. Please visit [www.gehealthcare.com/promotional-locations](http://www.gehealthcare.com/promotional-locations).

Data subject to change.

© 2018 General Electric Company.

GE, the GE Monogram, imagination at work, LOGIQ, XDclear, cSound, B-Flow and HDlive are trademarks of General Electric Company.

Tricefy is a trademark of Trice Imaging.

Reproduction in any form is forbidden without prior written permission from GE. Nothing in this material should be used to diagnose or treat any disease or condition. Readers must consult a healthcare professional.

February 2018 JB54962XX 299-18-U014E