

# Evidence for Spectral Imaging CT is mounting...

## INCREDIBLE BREADTH OF RESEARCH ON GSI

300+

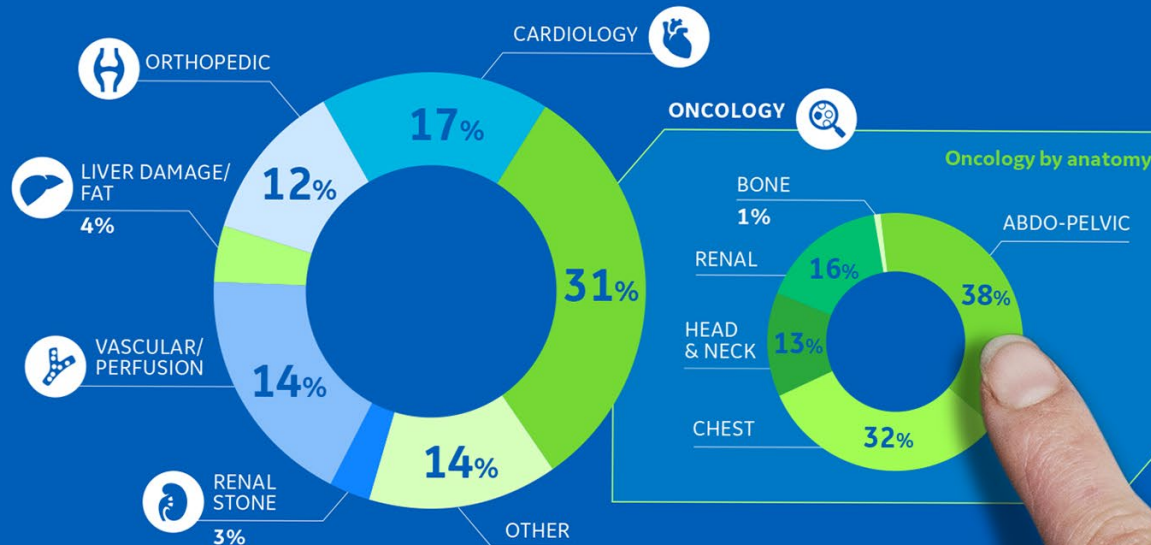
Journal publications  
2010-2017



33%

Avg. yearly growth in #  
of publications 2011-2017

### BY CLINICAL APPLICATION



## Professional society consensus statements on DECT clinical utility for<sup>1</sup>:



Quantitative assessment of **fatty liver** and contrast up take in focal **hepatic lesions**



**Renal masses** and **urothelial tumors**



**Improved iodine sensitivity** from DECT angiography



Reduced artifacts in patients with **orthopedic metallic implants**



Known or suspected **pancreas neoplasms**



Routine clinical use **for carotid/ cerebral and extremity CTA**



Routine **pulmonary CTA**



**Renal stones** to discriminate uric acid stones



**Radiation doses** are reliably comparable to SECT

1. White Paper of the Society of Computed Body Tomography and Magnetic Resonance on Dual-Energy CT, Part 2: Radiation Dose and Iodine Sensitivity; Part 3: Vascular, Cardiac, Pulmonary and Musculoskeletal Applications; Part 4: Abdominal and Pelvic Applications. Journal of Computer Assisted Tomography (2016). © 2018 General Electric Company - All rights reserved. GE and GE Monogram are trademarks of General Electric Company. GE Healthcare is a division of General Electric Company. TM. Trademark of General Electric Company.

