



GE Healthcare

iCenter Account

Visualize your data to help optimize assets

Sign Up

1 To create an iCenter account, click “Sign Up”.

On Sign Up page, complete the Request Form.

2

Get Started

Please fill out the request form below and one of the iCenter's support team will create your account.

First Name

Last Name

Email

xyz@abcHospital.com

Facility website (URL)

http://www.abcHospital.com

ID of any equipment within your facility, if available

☐

I'm not a robot



reCAPTCHA

Privacy - Terms

Request Account

By clicking on 'Request Account' I Agree to GE's Terms of Service and Privacy Policy

Click “Request Account”

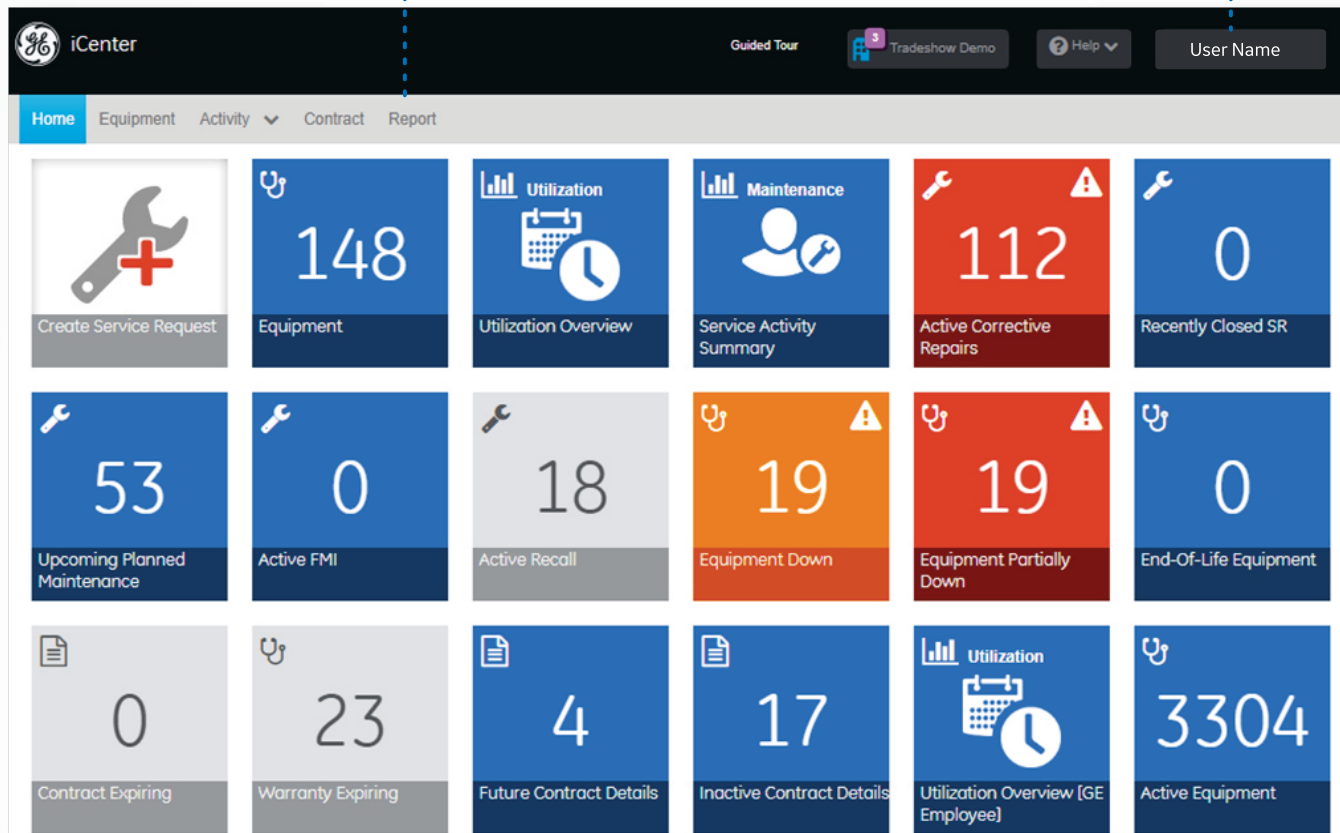
3

4 **Check your professional email for the following messages from the GE Service Desk:**

1. [iCenter] Account request received: Confirmation that GE Support has received your account request
2. UPDATED iCenter INC#####: Indication that your account request has been approved
3. NC##### - [iCenter] Account request: iCenter Welcome kit, including your SSO username and password

Your account settings are accessible under user name drop down menu.
You can also logout from the application

The primary navigation menu is available to navigate across the application. It is displayed on every page.

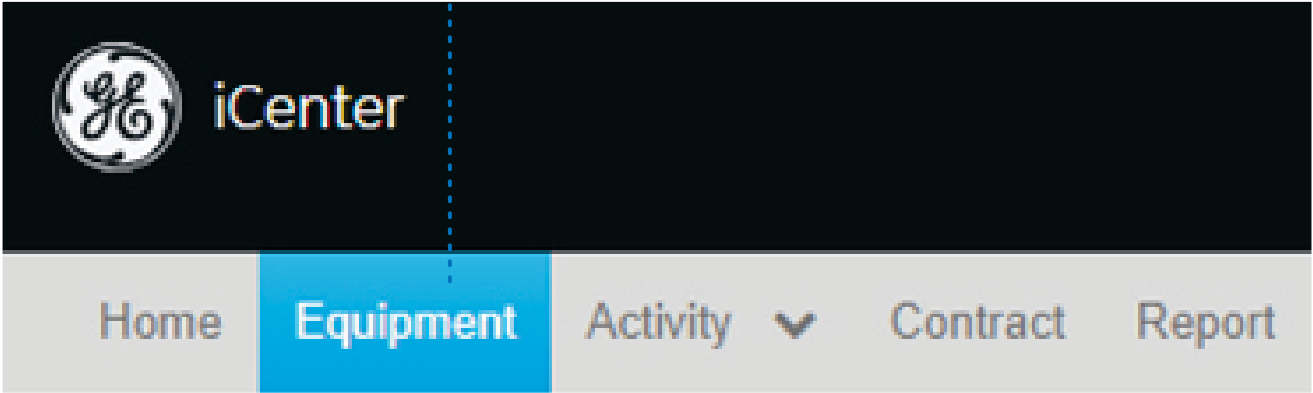


The home page tiles provide a way to quickly access the information you need:

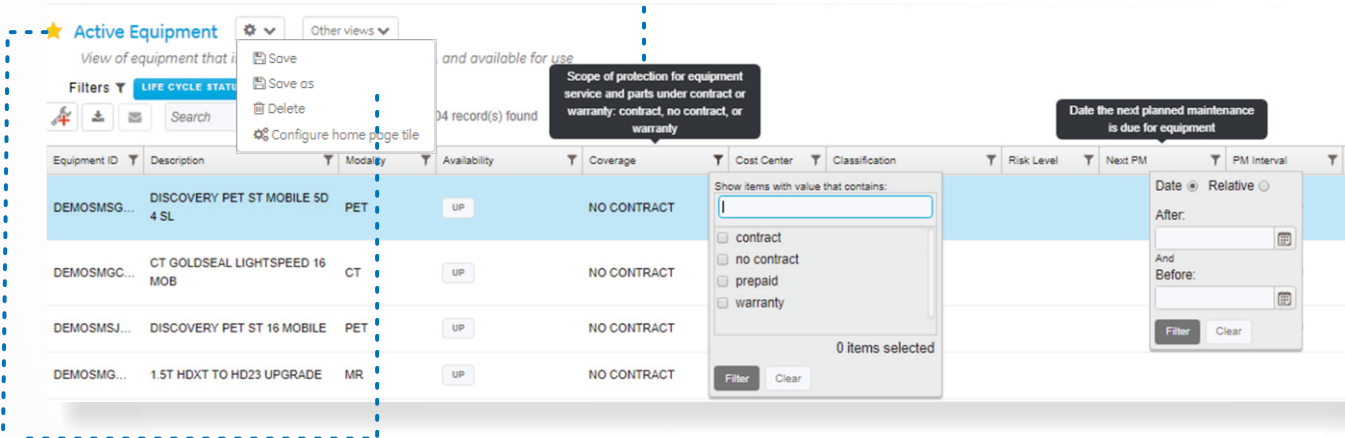
- Each tile corresponds to a view of the data
- The displayed number shows the count of items in the view
- You can fully customize your homepage by building new views and displaying new tiles, coloring them based on item count values.

Create custom tile

- 1 Select “Equipment”, “Activity”, or “Contract”



- 2 Filter or rearrange columns to select data you would like to display



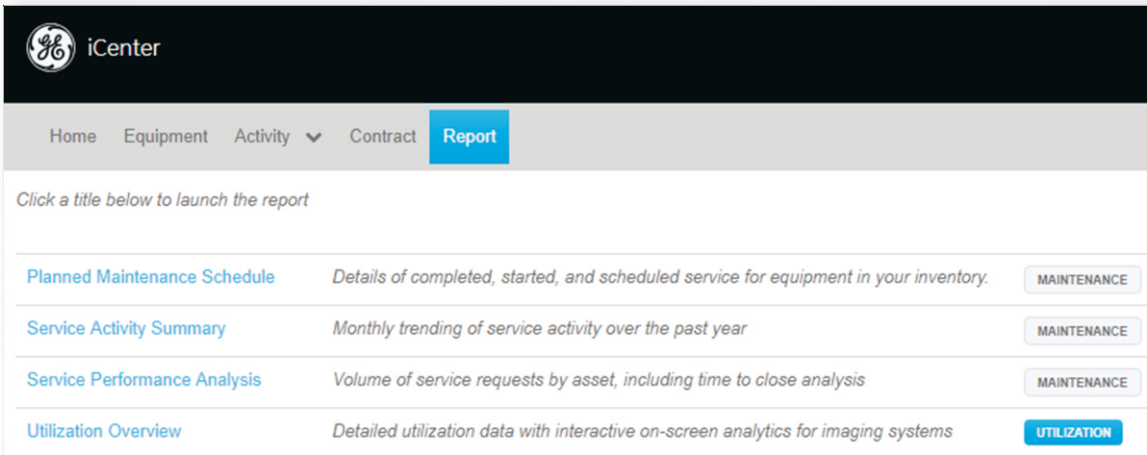
- 3 Under setting, select “Save as”. In new pop-up window, name the new title. Then, select “Save”.

- 4 Click the star in order for saved report to appear as a tile on the home page.

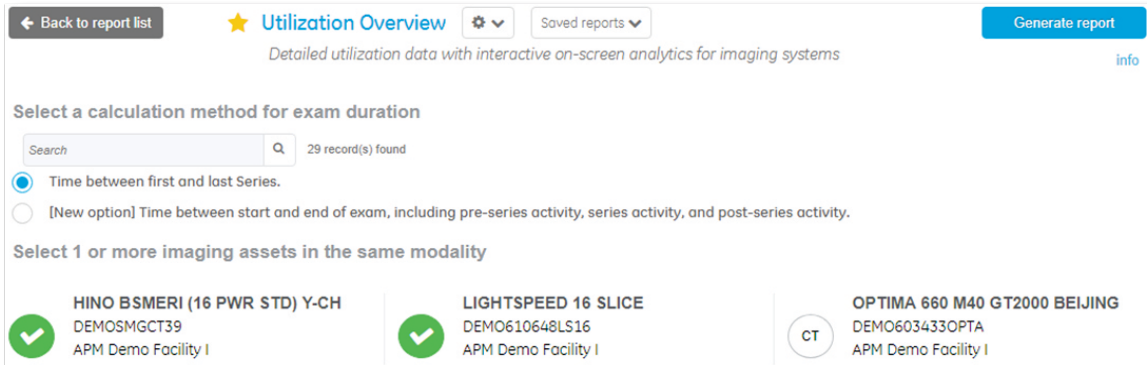
- 5 The new tile will appear on your iCenter Home page.

Create utilization report

- 1
- Select “Report”. Then, under “Utilization Overview”, click the “Utilization” button.



- 2
- Select one or more assets in the same modality. Then, click “Generate Report”.



- 3
- Select time frame, and download report.

