

CVWorks

Elective Applications

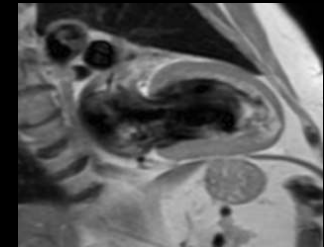
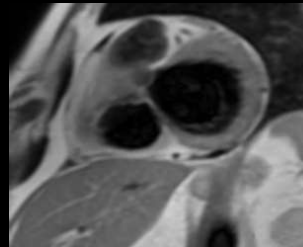
Black Blood SS FSE

A sequence used to suppress the signal of flowing blood which results in a faster scan compared to FSE. Scan can be acquired while free breathing or within a single breath-hold.

Clinical benefits:

- Helps to reduce scan time and repeats due to patient's condition or inability to hold their breath
- Provides whole heart coverage in one or two breath-holds for increased patient tolerance
- Aids in the evaluation of congenital heart disease and edema for Acute Myocardial Infarction

T1 SSFSE DIR Black Blood



T2 SSFSE DIR Black Blood

