

CVWorks

Elective Applications

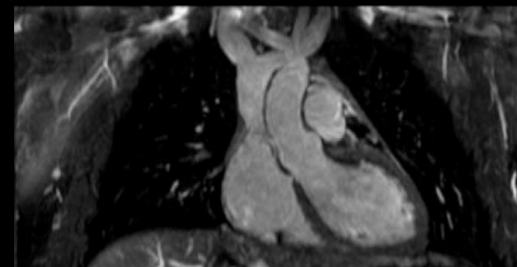
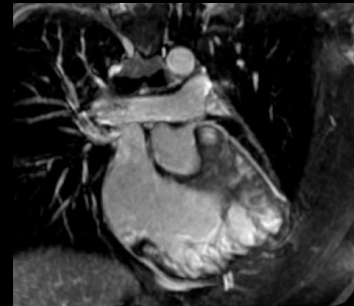
3D Heart

3D Heart is a 3D free-breathing, non-contrast assessment of the whole heart that can be used on both adults and children. Two different sequences are used per system type; 1.5T uses a 3D FIESTA-based sequence and 3.0T uses a 3D FGRE-based sequence. Cardiac gating, is required but uses a Navigator pulse to track respiratory motion.

Clinical benefits:

- Free breathing, non-contrast features help to increase patient tolerance
- Helps to evaluate congenital heart disease
- Aids in the assessment of coronary arteries and heart morphology

3D Heart reformatted into different imaging planes



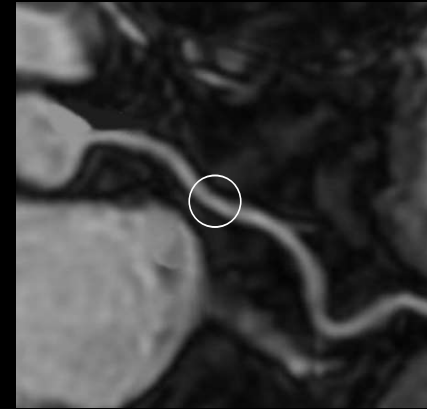
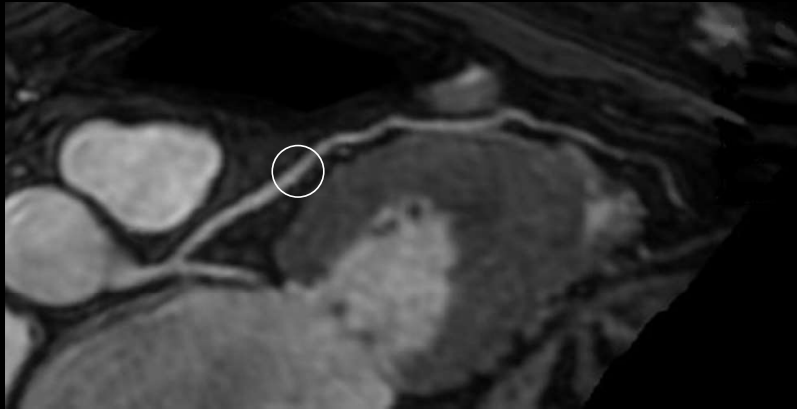
Not all Elective Applications come standard on every system. Please contact your GE Representative for the most current information.

CVWorks

Elective Applications

3D Heart

3D Heart and non-contrast enhancement coronary arteries visualization



Not all Elective Applications come standard on every system. Please contact your GE Representative for the most current information.