



GE HealthCare

Vivid™ iq


Ultra Edition*

Your patients rely on you.
You can rely on us.




Today's challenges

The perfect storm of increased demand and limited cardiology staff resources results in additional pressure and workload challenges on you and your team.

 **17 million**
people died from CVDs
in 2019¹

 **1 in 4**
cardiologists state they
are burned out²

 **>10%**
increase in Ischemic Heart
Disease (IHD) alone by 2030³

 **~20%**
of sonographers are leaving
the profession or taking
premature retirement⁴

 **~230 million**
annual echo exams
performed globally⁵

 **x2**
Shortage of health workers is
set to double⁶



Your patients rely on you. You can rely on us.

Patient care isn't just a job for you. It's a calling. A mission.

Of late, that mission has changed. Increased workloads, fewer skilled staff and increased demands on your time, resources and expertise are now the norm.

Getting the right images under this pressure is challenging.

But this isn't just a job for you and you have no intention of sacrificing quality in your practice when so much is at stake.

The Vivid iq cardiovascular ultrasound has been updated to meet today's challenges. To allow full portability to execute your echo exams with superb image quality away from the echo lab.

Because your patients rely on you, you can rely on us.

Your expertise. Our innovations.

Building on a history of advancements of cardiac patient care, GE HealthCare has been a true pioneer introducing breakthrough technologies, such as Color Doppler systems (1986) and 2D and AFI Speckle Tracking (2005).

Discover the latest innovative technologies that continue to push the technical capabilities for the benefit of you and your patients.

2020

- Improved UX (expanded trackpad functionality)
- AI Auto Measure (2D & Spectrum Recognition)
- AFI 3.0 & AutoEF 3.0
- AFI RV
- AFI LA
- Remote software updates with eDelivery

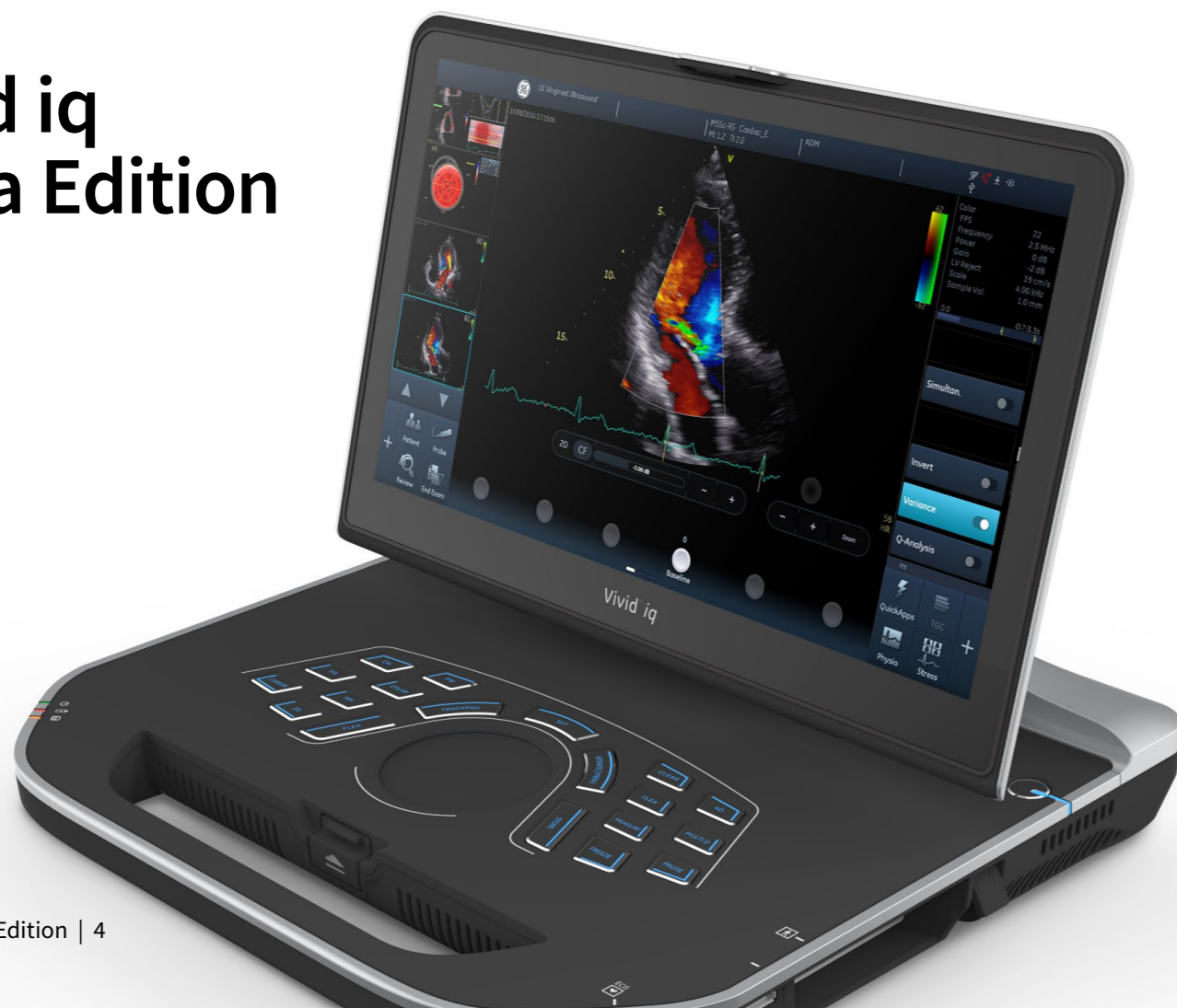
2022

- Easy AFI LV
- Easy AutoEF
- AI Auto Measure 2D
- L4-20t-RS Single Crystal⁷
- Dual Crop
- Pre-post compare
- Vascular contrast

2024

- Clarity+ for vascular imaging^{**}
- One-click QuickApp shortcuts^{**}
- New ergonomic cart^{**}
- Power-saving Sleep Mode^{**}

Vivid iq Ultra Edition



Let a compact exceed your expectations.

Powerful things do come in small packages. Vivid iq Ultra Edition^{*} is a sleek, ultra-portable system that allows you to take exceptional 2D and 4D images wherever you need, from hospitals, medical offices or outreach clinics, without any compromises.



Superb image quality

- Excellent cardiac 2D imaging with the M5Sc-RS XDclear™ Matrix probe
- Optimized vascular, abdominal and soft tissues visualization with Clarity+
- Seamless versatility with 2D ICE and 4D TEE capabilities



Extreme portability

- Lightweight console (11.5 lbs./5.2 kg.) and compact cart footprint (51 x 51 cm/21 x 21 inch)
- Up to 4 hours battery scan time on a cart (or up to 1 hour scan time with console only⁸)
- A new power saving mode provides extended portable echo usage by 22%⁹



Excellent ergonomics

- Some of the most important functions at your fingertips with expanded trackpad gestures
- Effortless image optimization with one-click access to frequently used QuickApps
- Work comfortably with ±45° left-right swivel¹⁰ and height-adjustable cart up to 113 cm/45 inch



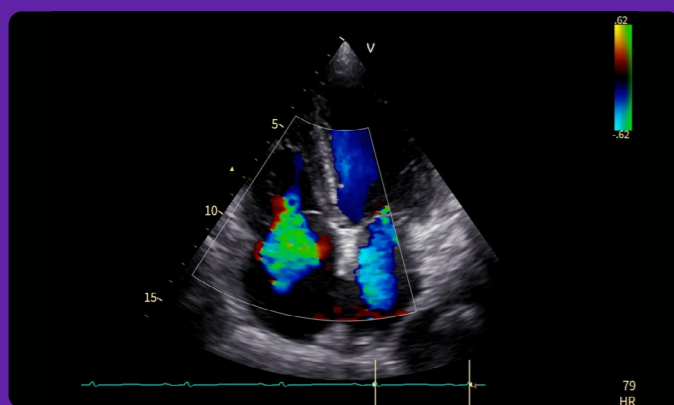
“The new gestures have minimized the need to move my hand and reach for the screen. These, combined with the new smarter cart design, reflect GE HealthCare’s commitment to the sonographer’s well-being. The Vivid iq v208 is a portable, class-leading unit.”¹¹

– Kam Aldridge
Senior Sonographer, QA & Infrastructure Manager,
Advara HeartCare, Australia

Your vision. Our superb images.

The diagnoses and treatment plans for your patients require a clear picture of their condition. With so much riding on the image, it has to be the best possible quality.

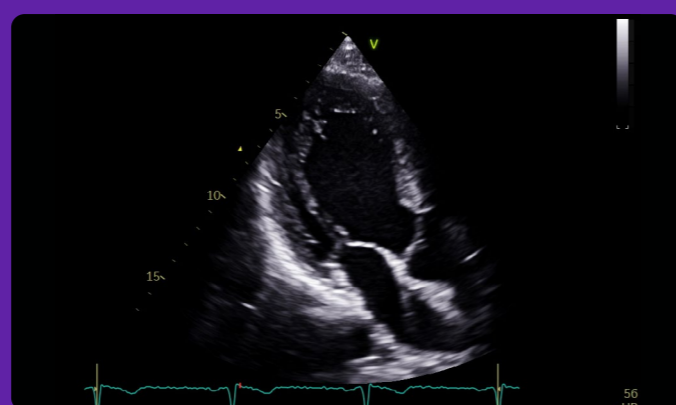
Excellent cardiac and vascular imaging



M5Sc-RS XDclear Matrix probe¹²

Superb image quality

An innovative combination of advanced materials and acoustic design providing ultra-wide bandwidth.



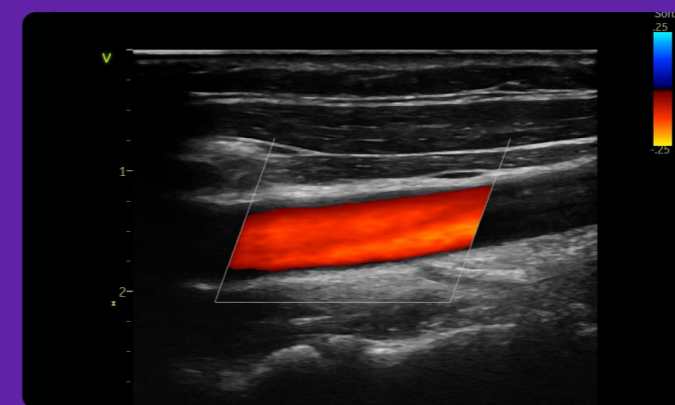
Penetration QuickApp

Improved visibility

Designed and tested by expert echocardiographers to achieve the best possible penetration in challenging imaging windows.



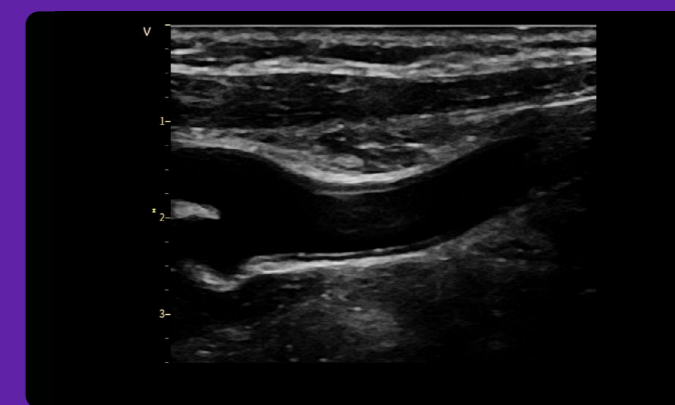
1 click to optimize penetration



L4-20t-RS single crystal linear probe

Beautifully clear vascular imaging

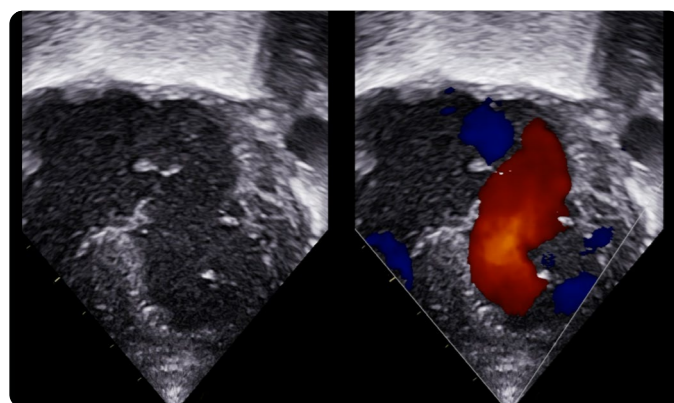
Four configurable control buttons allow you to ergonomically position yourself at the bedside, performing essential functions such as Freeze, Store, mode switch, among other functions, away from the scanner.



Clarity+

Optimized vascular, abdominal and soft tissues visualization

Enables image appearance optimization by enhancing smoothness and sharpening structural edges for clear visualization and differentiation between anatomical structures. Adjust Clarity+ using the easily accessible button on the touch panel.



Pediatric Echo

Visualize small anatomies with confidence

Exceptional image quality with the 12S-RS and 6S-RS probes designed to support confident diagnoses, from the tiniest newborns to children at any stage of development. The ultra-portable, small-footprint Vivid iq allows for easy access even in limited spaces in the NICU.

“The Vivid iq is the perfect system for ICUs due to its portability and size. For me, the most remarkable benefit from Vivid iq is the 12S probe image quality because its resolution is similar to that of a Premium system in patients from premature age to 3.2 kg.”¹³

– Dr. Gemma Giral
Pediatric Cardiologist,
Vall d’Hebron, Barcelona

High versatility

Ever wished you could use the same compact cardiovascular ultrasound in the echo lab, OR, and interventional labs? Do more with Vivid iq 2D TTE, 2D and 4D TEE, and 2D ICE imaging.

Beyond adult echo lab.

2D Intracardiac Echo (ICE)

Great image quality, with easy and intuitive Intracardiac Echo (ICE) touch user interface for your 2D ultrasound-guided ablation and routine structural heart procedures.

CARTO¹⁵ Digital Streaming

Real-time visualization of cardiac anatomy enables confident guidance during electrophysiology procedures, thanks to Digital Streaming to CARTO video and network connection.

HD Color for interventional

4D color flow rendering technique for semi-transparent visualization of origin and size of high velocity jets.

Dual Crop

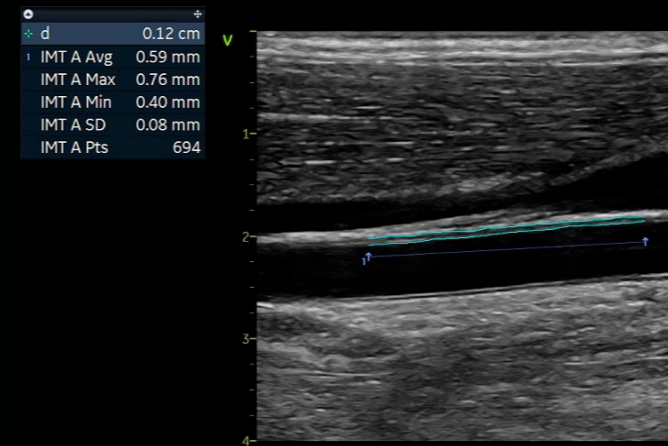
Fast and efficient visualization of complex structures from both sides simultaneously.



“The image quality of the Vivid iq is impressive for such a tiny system even on post-op patients. It is perfect to move from bed to bed and its modern workflow makes it super fun to use.”¹⁴

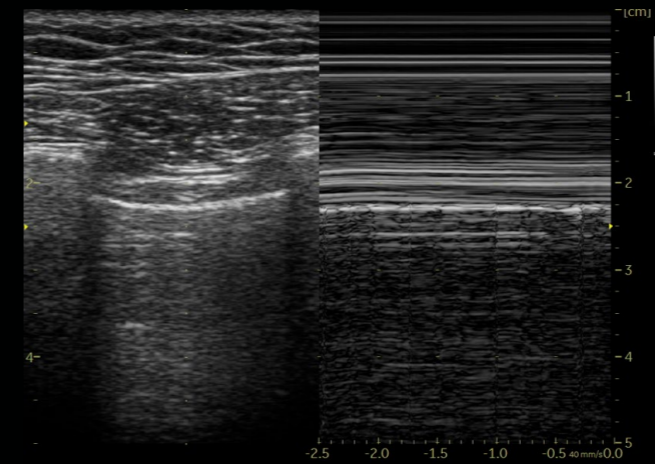
– Dr. David Blanchard
Cardiologist, Marie-Lannelongue Hospital, France

Beyond cardiology.



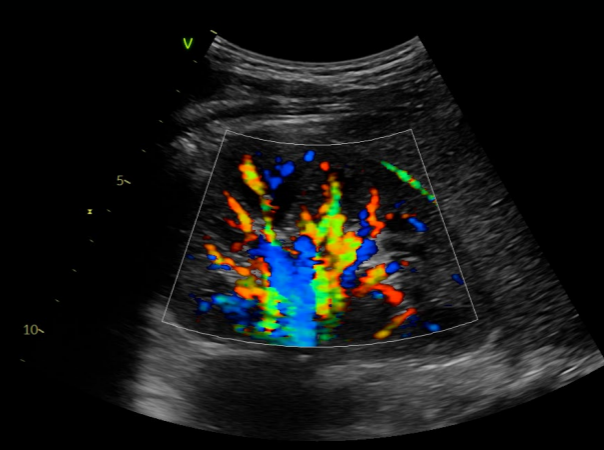
Vascular quantification

Develop fast and complete quantitative assessment of vascular anatomies, such as the Intima Media Thickness, with dedicated vascular measurement tools.



Lung assessment

Beside lung assessment is made easier with dedicated FAST and lung presets that help to quickly optimize images.



Abdominal diagnosis

Visualize tissues and flow patterns with greater details thanks to Vivid iq Ultra Edition's high-resolution imaging.

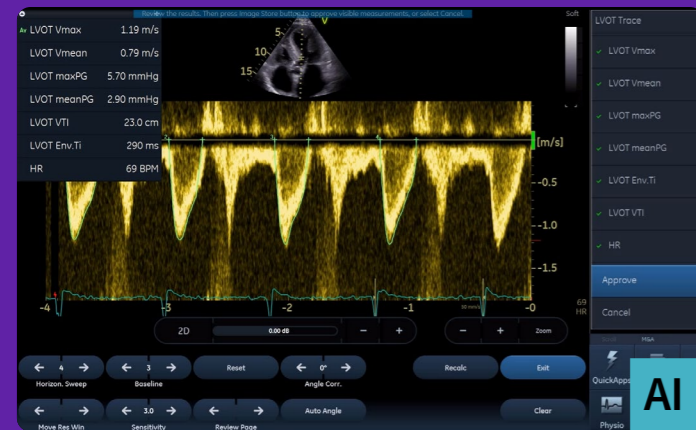
Your time. Our workflow tools.

Vivid iq Ultra Edition features the latest AI-based technology to help reduce tedious tasks and improve workflow efficiency.

AI Auto Measure 2D

With the power of AI, a full set of reproducible measurements will instantly appear on the screen.

 **80%** less clicks¹⁶



Cardiac Auto Doppler with AI Auto Measure Spectrum Recognition

Reduced time per measurement

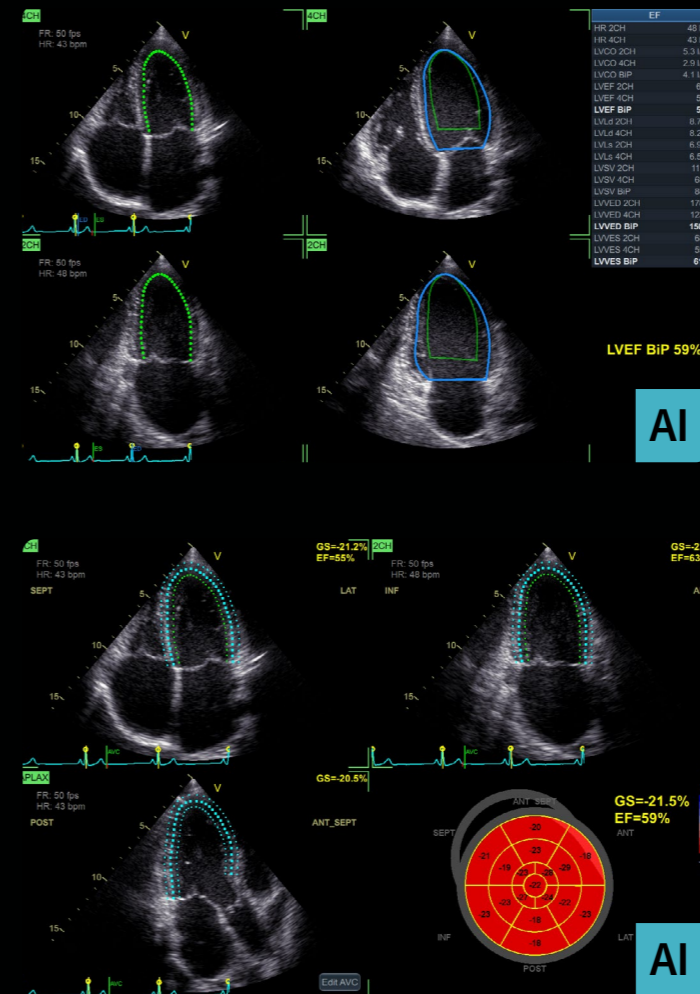
With the power of AI, a wide range of Doppler measurements can be completed with 2 clicks: Freeze – Measure. A Doppler trace and full set of associated measurements will instantly appear on the screen.

 Up to **93%** fewer keystrokes¹⁷




35% of cardiac sonographers miss work due to pain¹⁸

Powered by AI




Easy AutoEF

Our AI-based Auto ROI detection algorithm allows users to complete ejection fraction, with no manual interaction apart from initiating the tool and approving the results. 2 Chamber or 4 Chamber Ejection Fraction available with or without ECG.

 EF results in just **1 click**¹⁶

Easy AFI LV with View Recognition

Our AI-based global and segmental strain measurements require no manual interaction apart from initiating the tool and approving the results. Additionally, you will be able to view EF measurements.

 EF and strain results in **15 seconds** (on average)¹⁹

“We started out with the GE HealthCare Vivid iq systems and have progressed through every iteration to the current Vivid iq platform. The latest Vivid iq system provides excellent image quality with superior useability and interface to anything on the portable market. The available AI measurement packages ensure our team members daily schedule is seamless and efficient.”¹¹

– Kam Aldridge
Senior Sonographer, QA & Infrastructure Manager,
Advara HeartCare, Australia

EchoPAC Connect†

Connect from anywhere,²¹ at any time, to any console.²² Create the workflow that works for you with the advanced echocardiography post-processing tool.



Connect from anywhere²¹

EchoPAC Connect† provides the flexibility you need to accommodate to the unique way you work, whether your department is equipped with GE HealthCare ViewPoint™ 6 server, Centricity™ PACS, or any 3rd party PACS vendor.²² Perform your measurements & diagnosis on site or remotely, with the same excellent quality as on your acquisition consoles.

Multi-vendor²³

With EchoPAC Connect, you can enjoy a wide spectrum of 2D & 3D Vivid applications, from standard to most advanced measurements, regardless of which console was used to acquire your patients' images.²³

The power of EchoPAC

Leverage Vivid's powerful AI-based technology, introduced on Vivid Ultra Edition,[†] aimed to reduce tedious tasks and improve workflow efficiency.

Reduce tedious tasks of most common exams and acquire measurements in 1 simple click with Easy AutoEF and Easy AFI LV. Measurements can be obtained in less than 15 seconds.¹⁹

Seamless workflow integration

EchoPAC Connect provides you with a seamless workflow experience thanks to a centralized server installation and DICOM® server, which automatically transfers data from all acquisition systems,²² whatever the brand, directly to your EchoPAC Connect.

Dongle-free. Peace of mind. The seamless integration of EchoPAC Connect will simplify your everyday workflow.

“I am amazed by the measurements you can perform on EchoPAC after the patient has left!”²⁰

– Dr. Lamin E.S. Jaiteh
Consultant Cardiologist & Lecturer in Cardiology Department of Internal Medicine, Edward Francis Small Teaching Hospital/School of Medicine & Allied Health Sciences, University of the Gambia

[†] EchoPAC Connect is a marketing name for EchoPAC Plug-in (v206) combined with a GE HealthCare Host. It is possible for several EchoPAC Plug-in users to open the same patient records. However, only the first user will have access to all the features of EchoPAC Plug-in. Other users will have read-only access to the patient records. This behavior may change depending on the host in which EchoPAC Plug-in is integrated.

Your skills. Our support.

In the core echo lab and even beyond cardiology, smart applications support your know-how.

Visualization and navigation

		Ultra Edition	
4D Markers	FlexiViews	HD Color	Dual Crop
View-X	LVO Contrast	Scan Coach	Pre-Post Compare
		Vascular Contrast	Strain Elastography
		QuickApp shortcuts	

Flow Quantification

	Ultra Edition
Cardiac Auto Doppler <small>AI</small>	AI Auto Measure Spectrum Recognition <small>AI</small>

AFI Functional Imaging

	Ultra Edition
AFI RV/LA	Easy AFI LV <small>AI</small>

Valves and Chambers Quantification

		Ultra Edition	
4D Auto AVQ	4D Auto MVQ	AI Auto Measure 2D <small>AI</small>	Easy AutoEF <small>AI</small>
4D Auto LVQ			

Your community. Our collaboration.

Vivid is much more than just a system. Make the most of your Vivid experience with our community resources and learning opportunities.



Vivid Talks
Our “Meet the Expert” sessions (Vivid Talks) on wide-ranging subjects from echo lab to interventional.



Strain Learning Academy
Our Learning Academy is dedicated to supporting the industry in advancing strain measurement adoption.



Vivid Club
In this exclusive online community of cardiologists, echocardiologists and sonographers, you will have access to premium content only available to the Vivid Ultra Edition user.

Outperform today. Prepare for tomorrow.

Maximize the Vivid lifecycle experience while minimizing your total cost of ownership.



Digital Expert²⁸/STAR^{***}

Digital Expert (and STAR) provides an interactive, real-time, flexible & convenient way to get education and support.²⁸

 Live exchange with peers

Automated, remote SW downloads

Get automated software updates along with safety patches enabled by remote software download. Your system stays up-to-date, making it more reliable.

 Updates 24/7²⁷

SonoDefense

SonoDefense is GE HealthCare's six-layer strategic approach to cybersecurity and patient data privacy for ultrasound.

 Advanced cybersecurity & data privacy protection

References:

* Ultra Edition is not a product name, it refers to the 2022 release of the Vivid portfolio.

**Available on Vivid iq v208.

***Only available in the US.

1. World Health Organisation | [https://www.who.int/news-room/fact-sheets/detail-cardiovascular-diseases-\(cvds\)](https://www.who.int/news-room/fact-sheets/detail-cardiovascular-diseases-(cvds)).
2. Laxmi S. Mehta et.al. | Clinician Well-Being. Addressing Global Needs for Improvements in the Health Care Field | Journal Of The American College Of Cardiology Vol. 78, No. 7, 2021.
3. Moien AB Khan et.al. | Global Epidemiology of Ischemic Heart Disease: Results from the Global Burden of Disease Study | <https://www.ncbi.nlm.nih.gov/pmc/articles/PMC7384703/>.
4. Stephanie David | Importance of Sonographers Reporting Work-Related Musculoskeletal Injury: A Qualitative View | JDMS 21:234–237 May/June 2005 <https://journals.sagepub.com/doi/pdf/10.1177/8756479305274463>.
5. Based on results of GE HealthCare Global Echocardiography Procedure study conducted by iData Research, Inc. 2023.
6. World Health Organization | A universal truth: no health without a workforce. Nov 2013. <https://www.bmj.com/content/347/bmj.f6804>.
7. L4-20t-RS only available on Vivid iq Premium, 4D, and Point of Care versions.
8. Depending on operation modes used and battery status.
9. Calculated based on a typical daily mix of active scanning, ready to scan state, and Sleep Mode.
10. Premium Cart only.
11. The statements by Kam Aldridge described here are based on his own opinions and on results that were achieved in his unique setting. Since there is no “typical” hospital/clinical setting and many variables exist, i.e., hospital size, case mix, staff expertise, etc., there can be no guarantee that others will achieve the same results.
12. M5Sc-RS XD-Clear Matrix probe only available on Vivid iq Premium and 4D versions.
13. Dr. Gemma Giralt is a paid consultant for GE HealthCare and was compensated for her participation in this testimonial/case study. The statements by Dr. Gemma Giralt described here are based on her own opinions and on results that were achieved in her unique setting. Since there is no “typical” hospital/clinical setting and many variables exist, i.e. hospital size, case mix, staff expertise, etc., there can be no guarantee that others will achieve the same results.
14. Dr. David Blanchard is a paid consultant for GE HealthCare and was compensated for his participation in this testimonial/case study. The statements by Dr. David Blanchard described here are based on his own opinions and on results that were achieved in his unique setting. Since there is no “typical” hospital/clinical setting and many variables exist, i.e. hospital size, case mix, staff expertise, etc., there can be no guarantee that others will achieve the same results.
15. CARTO™ is a trademark of Biosense Webster, Inc., part of Johnson & Johnson MedTech. For market availability of CARTO™ in your region, please contact Biosense Webster, Inc., part of Johnson & Johnson MedTech.
16. The Role of AI in Streamlining Echocardiography Quantification White Paper, Kristin McLeod and Jurica Sprem – JB20789XX.
17. Based on results of time and motion study conducted by GE “JB30433XX - Cardiac Auto Doppler”; study results indicated time savings related productivity increase up to ~8 on an annual basis for a facility per sonographer.
18. Nicholas M. Orme et.al. | Occupational musculoskeletal pain in cardiac sonographers compared to peer employees: a multisite cross-sectional study | <https://onlinelibrary.wiley.com/doi/10.1111/echo.13344>.
19. Time to strain measurement result may vary with heart rate, frame rate and Vivid system. Verification of performance done by GE HealthCare clinical application specialists using Vivid system (DOC2739637).
20. Dr. Lamin E.S. Jaiteh is a paid consultant for GE HealthCare and was compensated for his participation in this testimonial/case study. The statements by Dr. Lamin E.S. Jaiteh described here are based on his own opinions and on results that were achieved in his unique setting. Since there is no “typical” hospital/clinical setting and many variables exist, i.e. hospital size, case mix, staff expertise, etc. there can be no guarantee that others will achieve the same results.
21. For diagnostic use, in citrix environment using Hospital IT network.
22. Enabled by ViewPoint 6 Desktop integration.
23. EchoPAC Plug-in provides basic and advanced viewing and quantitative analysis capabilities for 2D, 4D and multi-dimensional ultrasound parametric images from the GE HealthCare Vivid family of scanners, DICOM® images and 3D/4D from multi-vendor ultrasound fleet.
24. Please contact your sales representative for more information.
25. GE HealthCare internal data – Website analytics from January 2021 to December 2021.
26. GE HealthCare internal data.
27. Based on Software eDelivery Software installed.
28. Digital Expert is only offered in the USA. Digital Expert is not a functionality provided by Vivid systems. Digital Expert is separate from Vivid systems and is for education and training purposed only.

About GE HealthCare Technologies Inc.

GE HealthCare is a leading global medical technology, pharmaceutical diagnostics, and digital solutions innovator, dedicated to providing integrated solutions, services, and data analytics to make hospitals more efficient, clinicians more effective, therapies more precise, and patients healthier and happier. Serving patients and providers for more than 100 years, GE HealthCare is advancing personalized, connected, and compassionate care, while simplifying the patient’s journey across the care pathway. Together our Imaging, Ultrasound, Patient Care Solutions, and Pharmaceutical Diagnostics businesses help improve patient care from diagnosis, to therapy, to monitoring. We are a \$19.6 billion business with 51,000 colleagues working to create a world where healthcare has no limits.

Follow us on [LinkedIn](#), [X](#) (formerly Twitter), and [Insights](#) for the latest news, or visit our website <https://www.gehealthcare.com/> for more information.

Products mentioned in the material may be subject to government regulations and may not be available in all countries. Shipment and effective sale can only occur after approval from the regulator. Please check with local GE HealthCare representative for details.

© 2024 GE HealthCare. Vivid, XDclear, EchoPAC, ViewPoint and Centricity are trademarks of GE HealthCare. GE is a trademark of General Electric Company used under trademark license.

DICOM is the registered trademark of the National Electrical Manufacturers Association for its standards publications relating to digital communications of medical information.

Ultra Edition is not a product name, it refers to the 2022 release of the Vivid portfolio.

Third party trademarks are the property of their respective owners.

November 2024
JB20916XX



GE HealthCare