

Proven Connectivity

From GE medical devices to your EHR

Clinicians need access to accurate, timely data.

Now you can display GE device readings in your EHR using Iatric Systems Accelerero Connect® medical device integration. Accelerero Connect sends device results to patients' electronic records, giving clinicians enterprise-wide access to the data they need to assess patients and prescribe treatments without delay. And Accelerero Connect can send GE device readings to any EHR.

Iatric Systems has completed rigorous testing to validate connectivity between dozens of GE devices and Accelerero Connect. Accelerero Connect then takes those device readings all the way to your EHR. Iatric Systems has proven EHR integration, having deployed more than 25,000 interfaces to EHR systems at more than 1,300 hospitals worldwide. So you can invest in GE medical devices with full confidence that readings from those devices will be delivered directly and accurately to your EHR.

Flexibility — how it works

If all the medical devices at your hospital worked the same way, connecting them to your EHR would be simple. But your medical devices are diverse and always changing, so you need medical device integration that will fit those varied needs. Accelerero Connect offers a flexible, scalable solution to fit all your medical device integration needs — today and in the future.

CARESCAPE Gateway Devices:

The CARESCAPE® Gateway enables bi-directional data transfer with GE patient monitors. Iatric Systems has validated connectivity, messaging, nomenclatures, etc., to allow for a robust, industry-standard integration of CARESCAPE Gateway networked data into your EHR. Examples of devices from which the CARESCAPE Gateway collects data include CARESCAPE Modular Monitors, Dash* and Solar* Patient Monitors, and ApexPro* Telemetry.

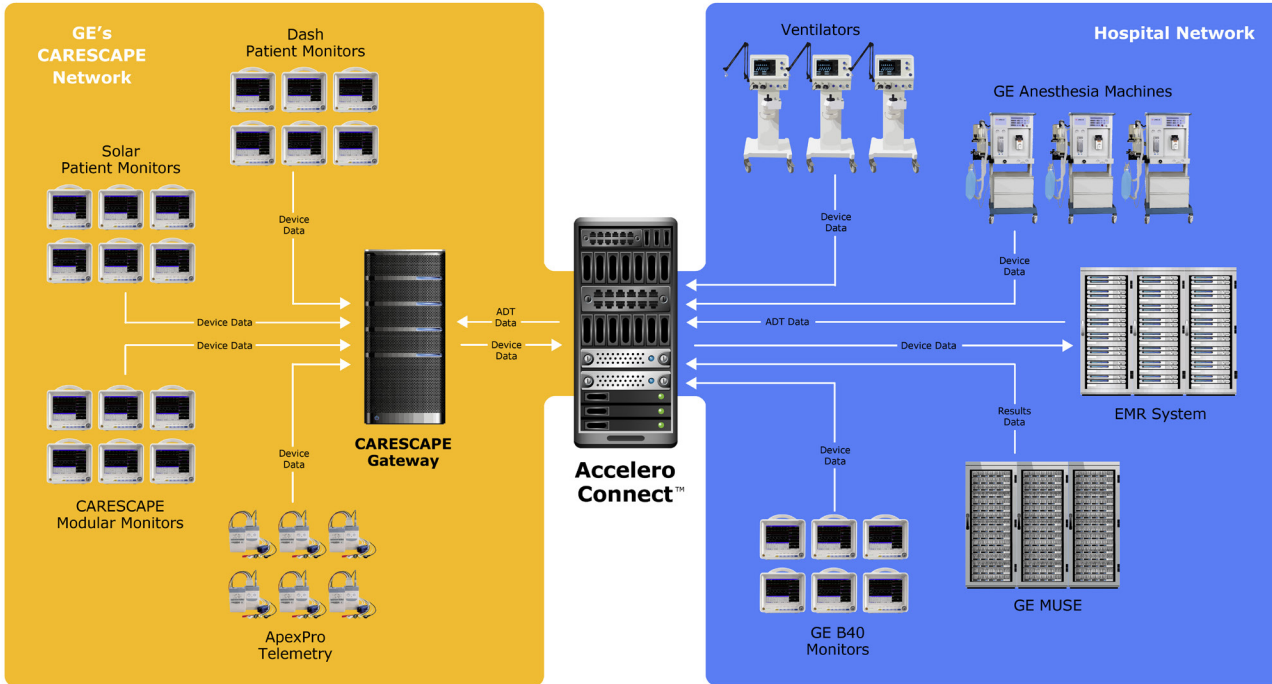
Network Addressable Devices: Some devices, such as the B40 Monitor, are capable of directly transmitting trended numerical data outbound using the IHE PCD-01 transaction. Hospitals that have elected to purchase the latest GE devices supporting direct network accessibility can take advantage of the validation testing Iatric Systems has accomplished to ensure integration of data from those devices directly into your EHR.

Non-Networked Devices: Other GE devices not connected to the CARESCAPE Gateway are supported via connectivity to the device's serial port. GE openly shares specific protocol documentation to allow this serial-based communication to take place. These devices, although having a different type of connectivity, still take advantage of the same Iatric Systems validated, industry-standard integration into your EHR. Examples of non-networked devices include the Aisys* Carestation, the Avance* Carestation, and the Engstrom* Carestation. Additionally, networked GE patient monitors also support data collection through the serial port.



Our Commitment

Proven connectivity is part of a long-term commitment by Iatric Systems to continue to validate connectivity between GE Healthcare devices and Accelero Connect as new GE devices are developed. Additionally, for applicable interfaces, Iatric Systems and GE Healthcare are committed to ongoing testing of conformance to the IHE Technical Framework with oversight from the National Institute of Standards and Technology (NIST) at annual IHE Connectathon events.



Certified GE Healthcare Medical Devices

Dash Monitor 3000, 4000, 5000

Solar Monitor 8000M, 8000i

CARESCAPE Monitor B450

CARESCAPE Monitor B650

CARESCAPE Monitor B850

CARESCAPE Gateway

CARESCAPE V100

B40 Monitor

Aware* Gateway

Aisys Carestation

Aisys CS2

Avance Carestation

Avance CS2

Aespire*

Aespire View

Aestiva*

Engström Carestation

* Trademarks of General Electric Company

To Learn More

For more information, please contact us using the information below.

