



LOGIQ E10

Empowering You to Make the Difference



Enabling Breast Imaging

DIAGNOSTIC CONFIDENCE FOR ANSWERS PATIENTS CAN TRUST

Clinical challenge

Detecting and characterizing breast disease, especially in women with dense tissue, can be challenging. Radiologists and sonographers need the highest quality imaging and robust tools to provide definitive answers and reduce patient stress.

GE solution

The LOGIQ™ E10 system helps you make a real difference in the lives of patients with breast disease. GE's cSound™ Architecture provides the excellent detail, contrast resolution and penetration required when performing breast studies.

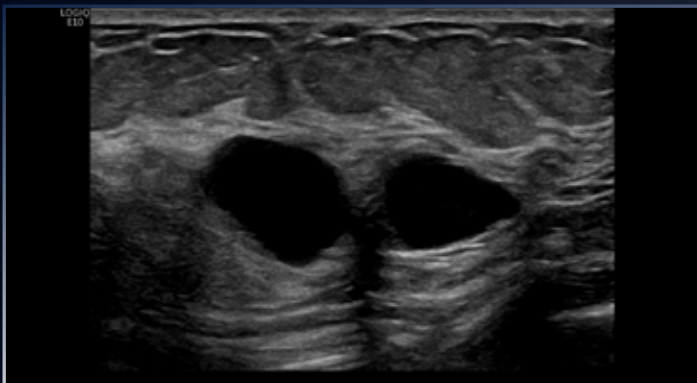


Confident diagnosis

The LOGIQ E10 enables clinicians to acquire extraordinary images across a broad spectrum of patients, with incredible uniformity from near to far field. The system's next-generation image platform delivers high penetration power.

Auto-optimized images: The cSound Imageformer automatically and continuously delivers top-to-bottom focus, with high spatial and contrast resolution. Images of extraordinary quality are quickly acquired across a wide range of clinical scenarios, with an efficiency that particularly benefits technically challenging cases.

Choice of high-performance probes: Select from E-Series and XDclear probes, including high-frequency probes designed for breast applications.



Breast Cysts, ML6-15-D

Comprehensive tools

The LOGIQ E10 provides robust tools that give radiologists a new level of confidence in their diagnostic decisions.

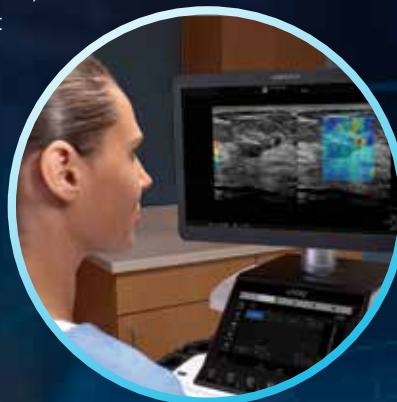
2D Shear Wave Elastography: Enables non-invasive assessment of lesion stiffness in breast while integrating smoothly with department workflow. Strain elastography is also available for qualitative tissue assessment.

Compare Assistant: Enables clinicians to easily view a prior study – ultrasound, mammography, CT or MR – and current images together in real time via a split screen on the monitor, helping to improve confidence and exam efficiency.

B-Steer+: Enhances needle visualization in real time to improve speed and confidence in breast biopsies.

Volume Navigation: The combination of 2D/3D GPS Tracking and Fusion Imaging can make a real difference in accuracy - potentially reducing procedure time and patient stress.

- **Fusion Imaging:** Merge real-time ultrasound with a volume DICOM® MR dataset to facilitate a second look examination and fusion guidance of biopsies of masses seen on MRI but not on ultrasound
- **2D/3D GPS Tracking:** Visually track position during a scan using GPS-like technology, and mark selected points of interest to save time and enhance confidence





> Concise workflow

The LOGIQ E10 can help radiology departments reduce the time required for evaluation of breast lesions while improving standardization in the reporting process.

Breast Productivity Package: Automates measurements and streamlines the labeling and description of lesions to help clinicians improve both efficiency and diagnostic confidence in breast evaluations.

Breast Measure Assistant: Breast lesions can be contoured and measured quickly with the help of Breast Measure Assistant. The breast-specific contouring function automatically traces lesion boundaries and generates two-dimensional measurements with just a few keystrokes.

Scan Assistant: Provides customizable automation to assist users at each step of an ultrasound exam, helping to reduce keystrokes and exam times.

DICOM SR Capabilities: Structured report formats have embedded measurements and link directly to ultrasound images to add efficiency and precision to workflow.

Raw Data: Expanded dual-screen capabilities enable users to apply a wide variety of image processing and quantification after the exam. This allows the operator to extract and reanalyze information without extending exam time.



Imagination at work

Product may not be available in all countries and regions. Full product technical specifications is available upon request. Contact a GE Healthcare Representative for more information. Please visit www.gehealthcare.com/promotional-locations.

Data subject to change.

© 2018 General Electric Company.

GE, the GE Monogram, imagination at work, LOGIQ, XDclear and cSound are trademarks of General Electric Company.

DICOM is a trademark of the National Electrical Manufacturers Association

Reproduction in any form is forbidden without prior written permission from GE. Nothing in this material should be used to diagnose or treat any disease or condition. Readers must consult a healthcare professional.

February 2018 JB53087XX(1) 299-18-U008E