

GE Healthcare

Recharge

your MR experience.

DV25.0 Continuum™ Pak

Imagine what MR can be.







Spark

a new future of growth.

Sometimes all it takes is a spark to inspire a whole new era of growth.

The DV25.0 Continuum Pak is just that. It provides you with leading advancements in patient comfort, the technology to meet the latest diagnostic trends and the applications to address challenges unique to today's clinical environment.

Whether you are looking to purchase a new platform or already have a premium platform¹, the DV25.0 Continuum Pak will help ensure that your future with MR is bright.

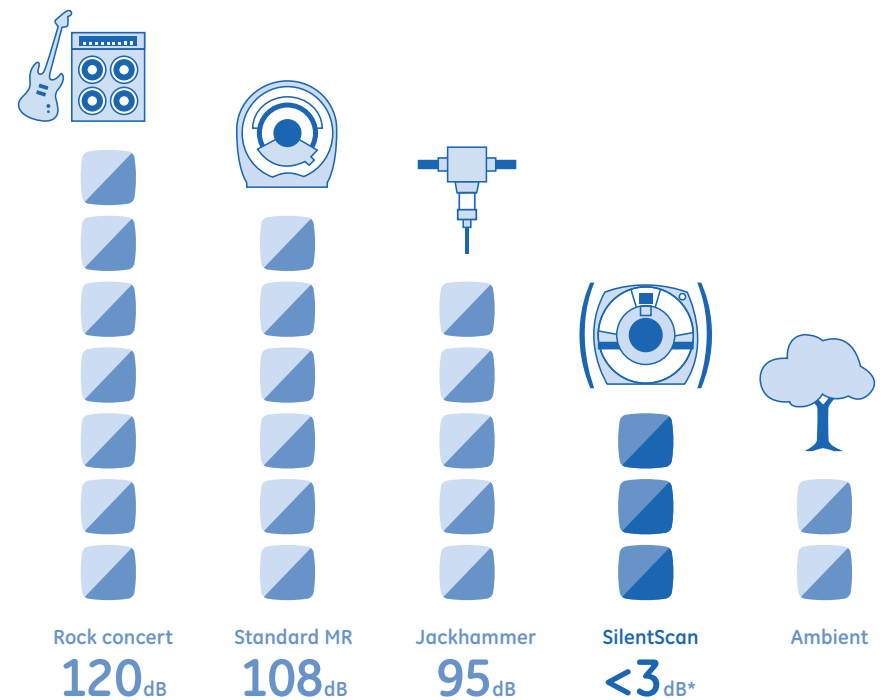


Expand

your commitment to patient care.

The DV25.0 Continuum Pak allows you to revitalize your commitment to patient care by bringing leading advancements in comfort to your clinical offering.

SilentSuite, our latest advancement in MR noise-reduction technology, has the ability to transform a patient's MR experience. With SilentSuite, you can conduct an entire neuro exam, now including diffusion, at near ambient levels. Other anatomies are now added to the list so routine exams can be performed at less than 11dB(A).

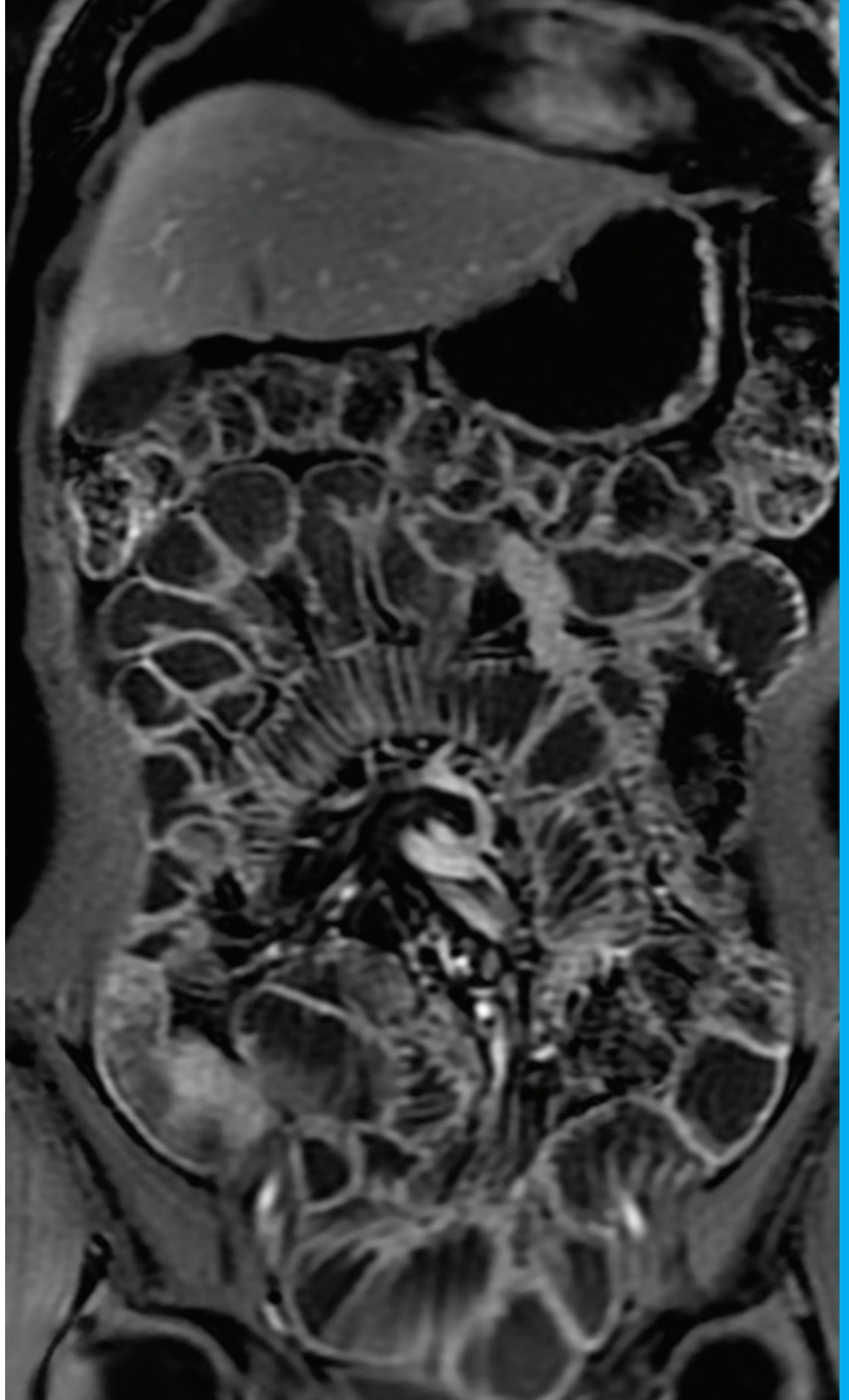


*Above ambient levels; sound measured at isocenter of bore.

In addition, the DV25.0 Continuum Pak includes GEM Flex positioners, which embrace patient anatomies to reduce pressure points and speed up scan set up times. All of this combined with new applications, like Turbo LAVA and eXpress Prescan, help to reduce table time for patients in addition to significantly reducing breath-hold duration.



Turbo LAVA Flex

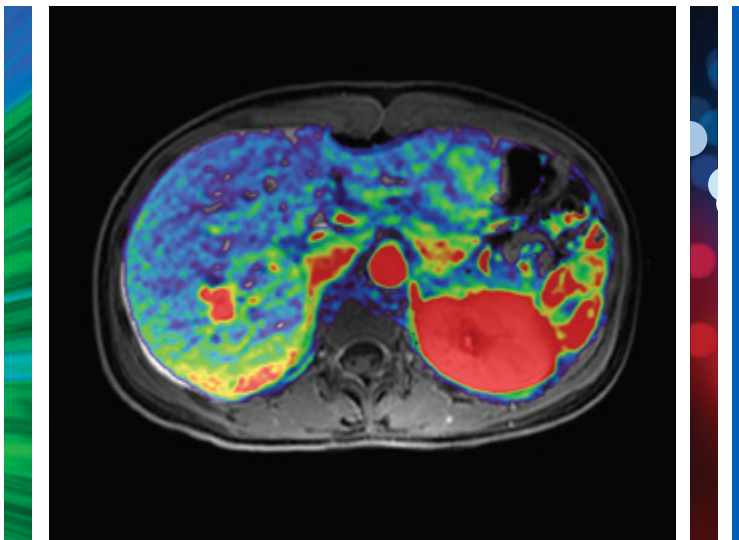




Define

your next diagnostic move.

Being strategic about clinical imaging requires having the foresight to revitalize the way you image today so that you are prepared for the imaging trends that will define the future of MR. The DV25.0 Continuum Pak is designed to provide you with key technologies to strengthen your clinical capabilities in order to accelerate your next diagnostic move.



DISCO
1.5mm isotropic in <4 sec

DISCO – changes the paradigm for body/oncology imaging through a unique, high-temporal and spatial resolution approach in a scan time not previously possible.

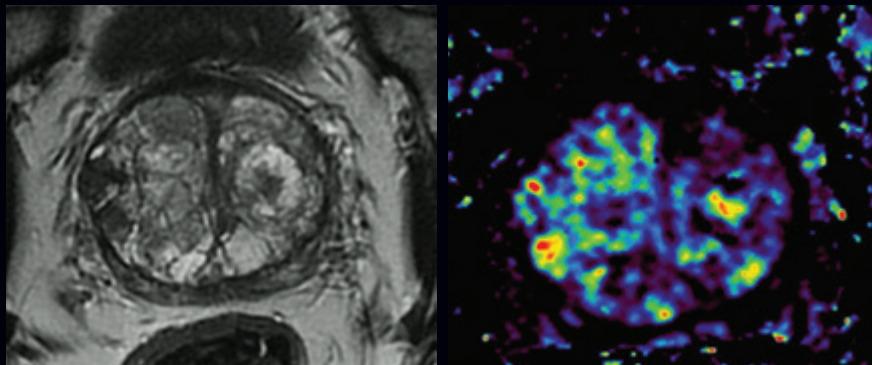
MAVRIC SL 2.0 – meets the needs of an aging population with the ability to image around MR conditional implants. MAVRIC SL 2.0 uses multiple contrasts to obtain clear images with minimal artifacts.

Turbo LAVA – addresses the need in body imaging for multiple high-resolution arterial phases in a single breath-hold.

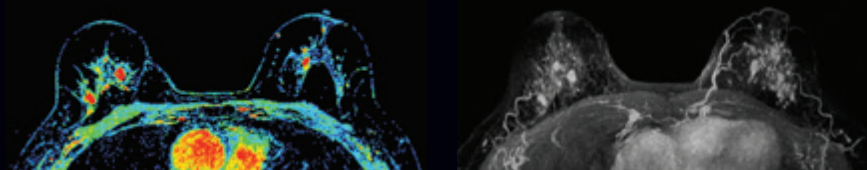
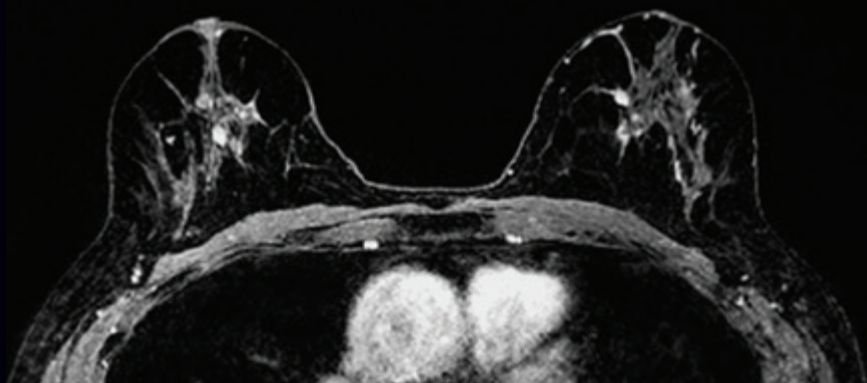
Cube DIR – neuro imaging continues to grow, along with the need to better visualize white matter diseases such as Multiple Sclerosis. Cube DIR provides volumetric imaging with an enhanced ability to visualize white matter lesions.

MDE PLUS - expands your cardiac imaging capabilities with high-resolution single breath-hold whole heart acquisitions.

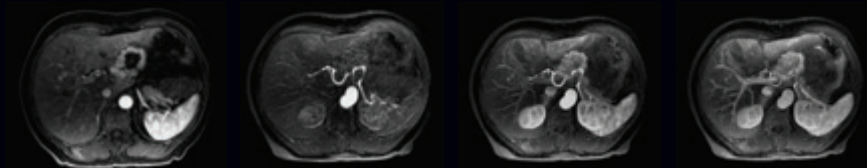




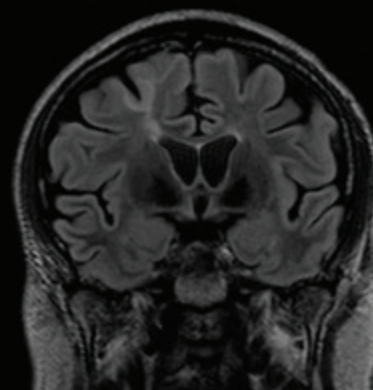
DISCO Prostate



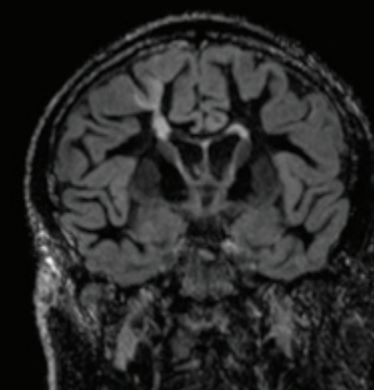
DISCO Breast



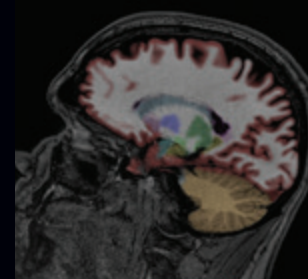
DISCO Liver



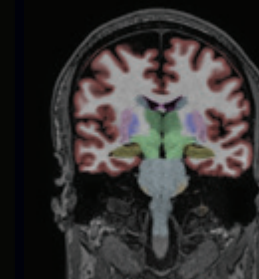
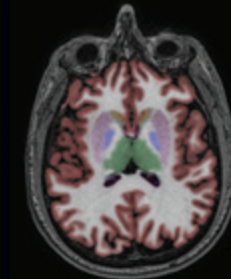
3D FLAIR



3D Cube DIR



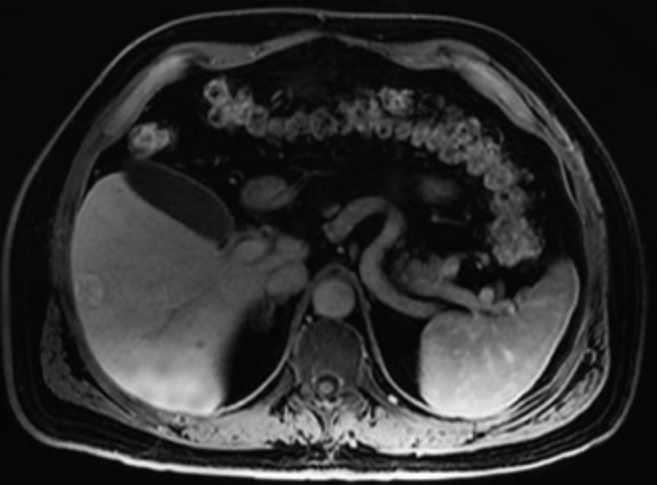
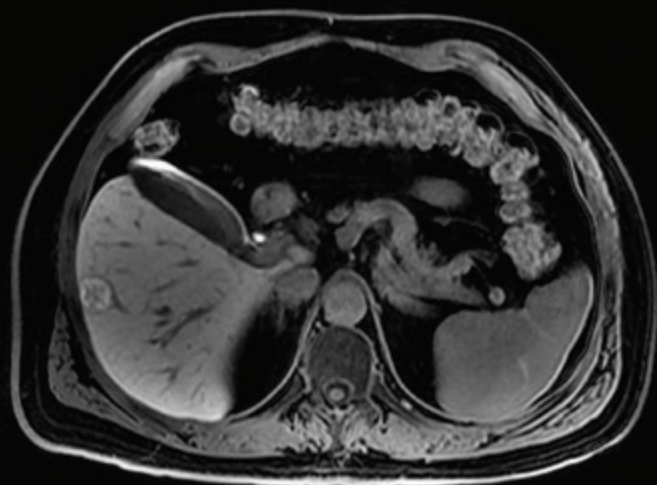
3D FSPGR



DISCO
Rapidly generates time-resolved
4D images to meet the challenge
of multidynamic imaging.
Dynamic volumes of 1.5 mm³ at
less than 4 seconds.

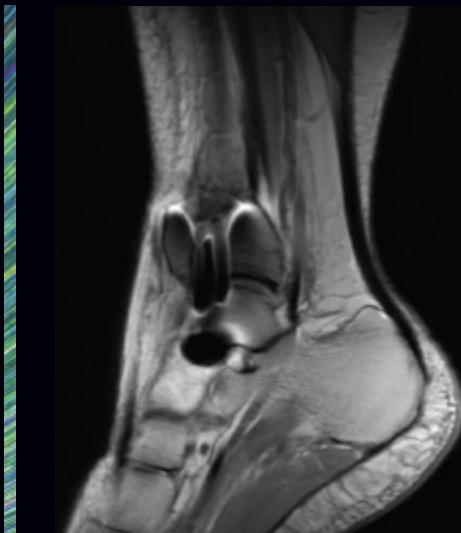
Cube DIR
Delivers improved conspicuity due
to the suppression of white matter
tissue.

High-channel, high-resolution
anatomical images for morphometry
and volumetric imaging results.

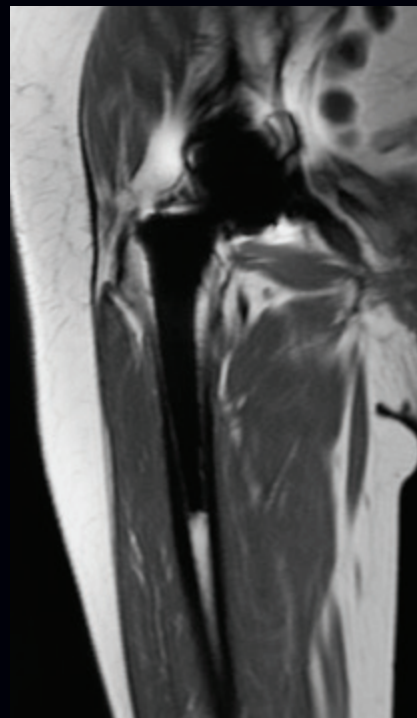


Turbo LAVA

Turbo LAVA
Provides as much as 40 percent reduced breath-hold times compared to the conventional techniques.

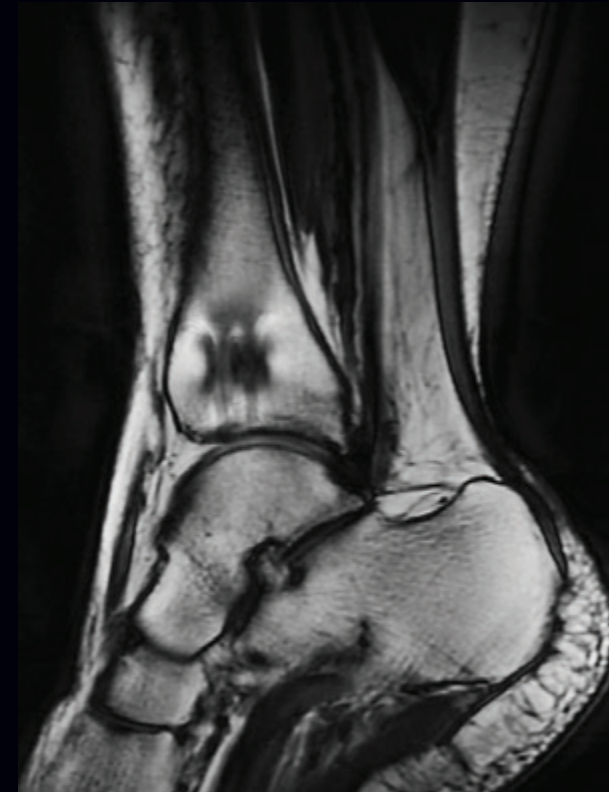


Conventional High Bandwidth Metal Artifact Reduction Sequence

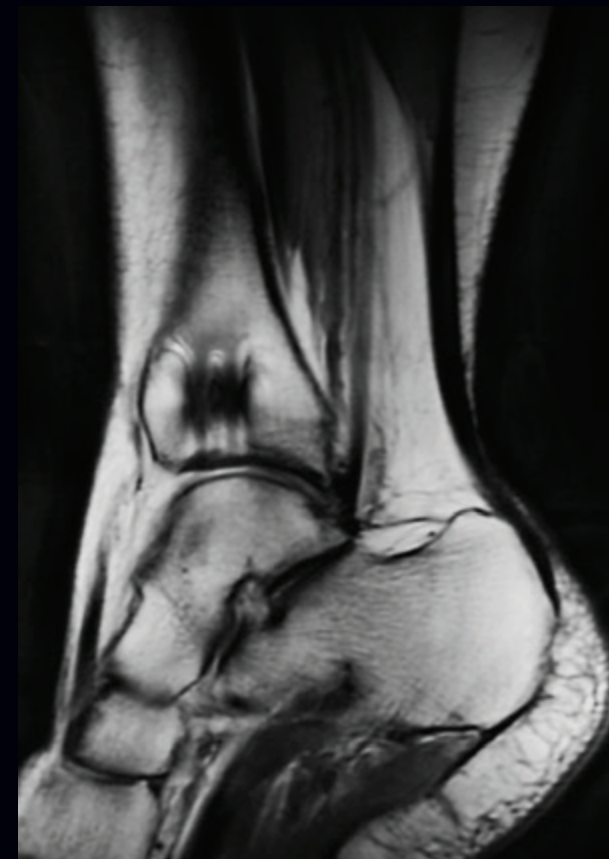


MAVRIC SL STIR

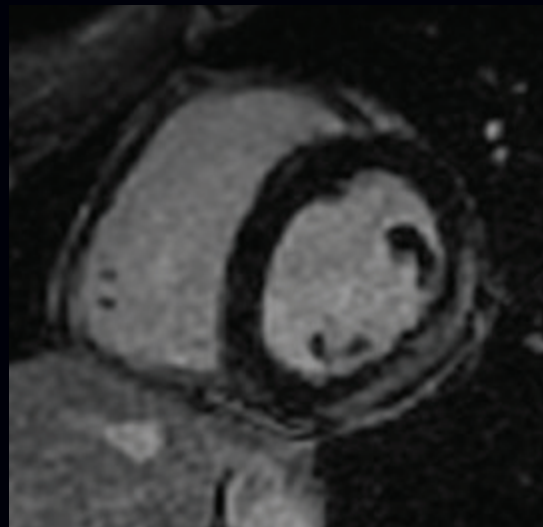
MAVRIC SL 2.0
Provides a full suite of image contrasts based on a 3D FSE technique to image in the presence of MR conditional implants. MAVRIC SL utilizes a novel volumetric sequence for multiple image contrasts, considerably reducing in and through-plane artifacts.



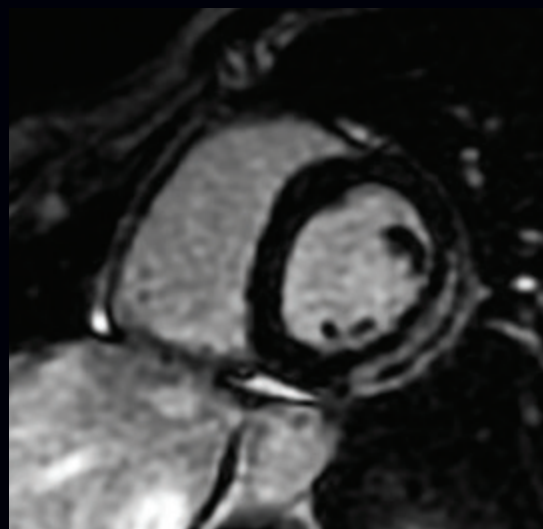
MAVRIC SL T1



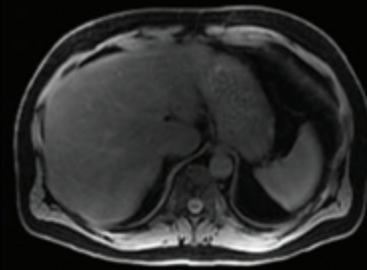
MAVRIC SL PD



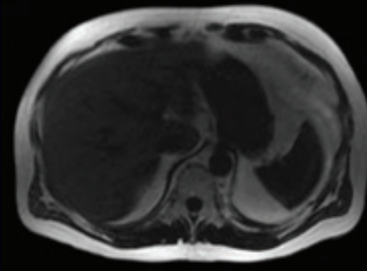
MDE Fat Suppressed



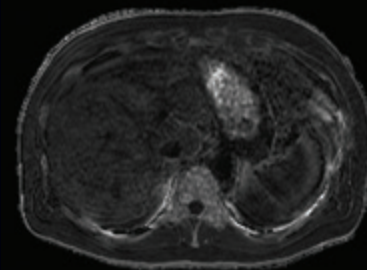
FIESTA Single Shot MDE



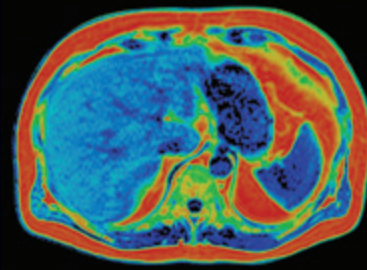
IDEAL IQ Water Only



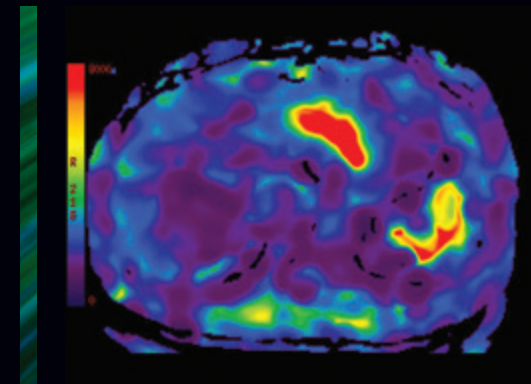
IDEAL IQ Fat Only



R2* Map



IDEAL IQ Fat Fraction

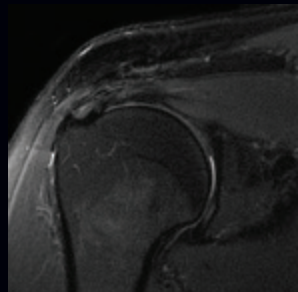


MR Touch

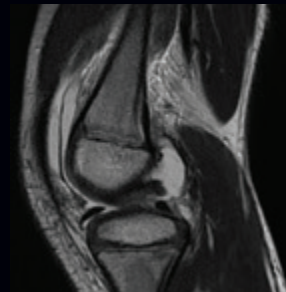
MDE PLUS
Provides high-resolution, whole heart, single-breath-hold delayed enhancement imaging results. Additionally, fat suppression can be applied to standard MDE.

IDEAL IQ WITH ARC
Delivers unique information regarding fat infiltration within the liver. By combining ARC and IDEAL IQ, you can reduce the breath-hold or increase spatial resolution.

MR Touch
The new MR Touch algorithm can provide an increase in productivity through faster processing and improved image visualization.



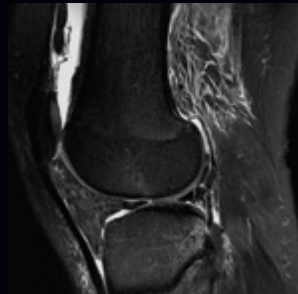
Silent PROPELLER Shoulder with Fat Suppression



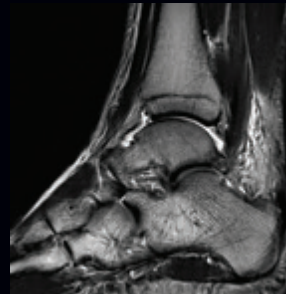
Silent PROPELLER Pediatric Knee



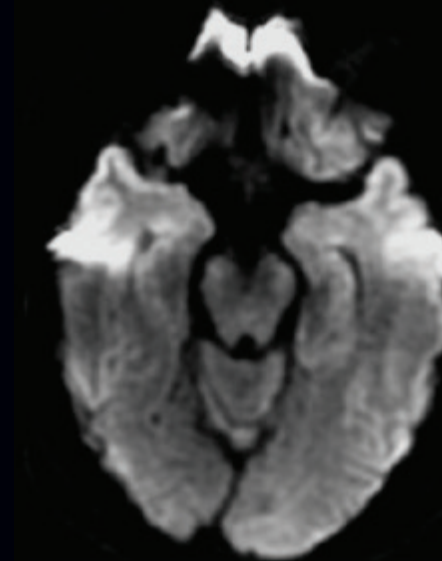
Silent PROPELLER Spine



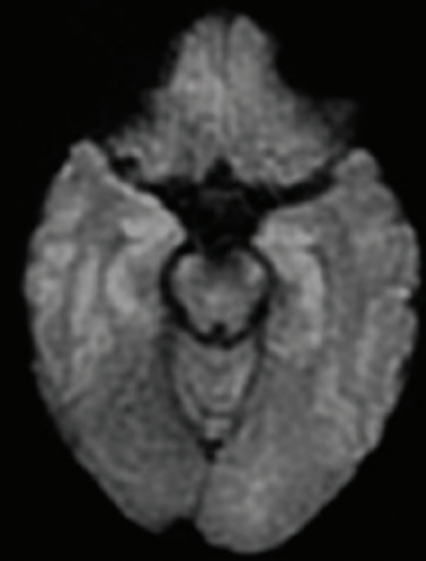
Silent PROPELLER Knee with Fat Suppression



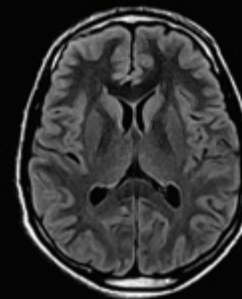
Silent PROPELLER Ankle with Fat Suppression



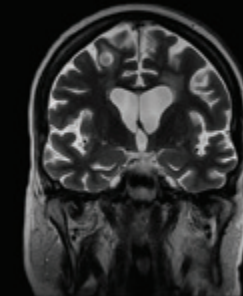
Conventional DWI



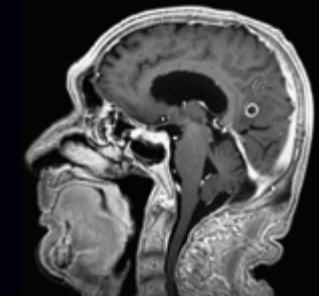
Silent DWI



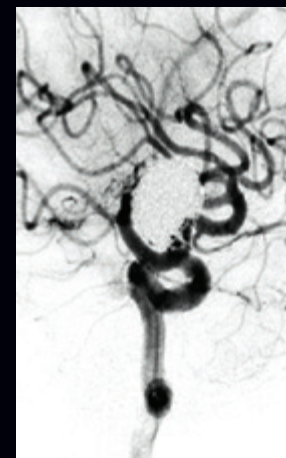
Silent PROPELLER T2 FLAIR



Silent PROPELLER T2



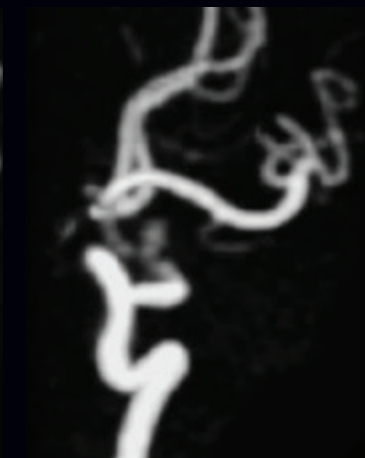
Silenz T1



Digital Subtraction Angiography



Conventional TOF



Silenz MRA²

SilentSuite
Delivers unique patient comfort features through imaging at the sound of Silenz (less than 3dB over ambient). SilentSuite now includes sequences covering the entire body and contrasts like DWI.

SilentScan Zero-TE
Results in considerably reduced susceptibility related artifacts.



Exam
Patient Weight 220 lbs.
Patient Position
Landmark
Start
Auto Start



Empower

your clinical performance.

In order to meet today's productivity demands, we listened to our customers and developed a strategic set of workflow enhancements to accommodate higher patient volumes and an increasingly diverse range of patient and operator situations.

The DV25.0 Continuum Pak reduces pre-scan set up times by more than 50 percent with new automating procedures. It also takes the guesswork out of more complicated procedures with new linking and copy/paste enhancements for protocol creation. And, because the GEM Flex coil positioners help you accommodate most patient sizes, you get the advantages of rigid coils without their limitations. Which means easier set up and less patient movement during an exam.



Supercharge

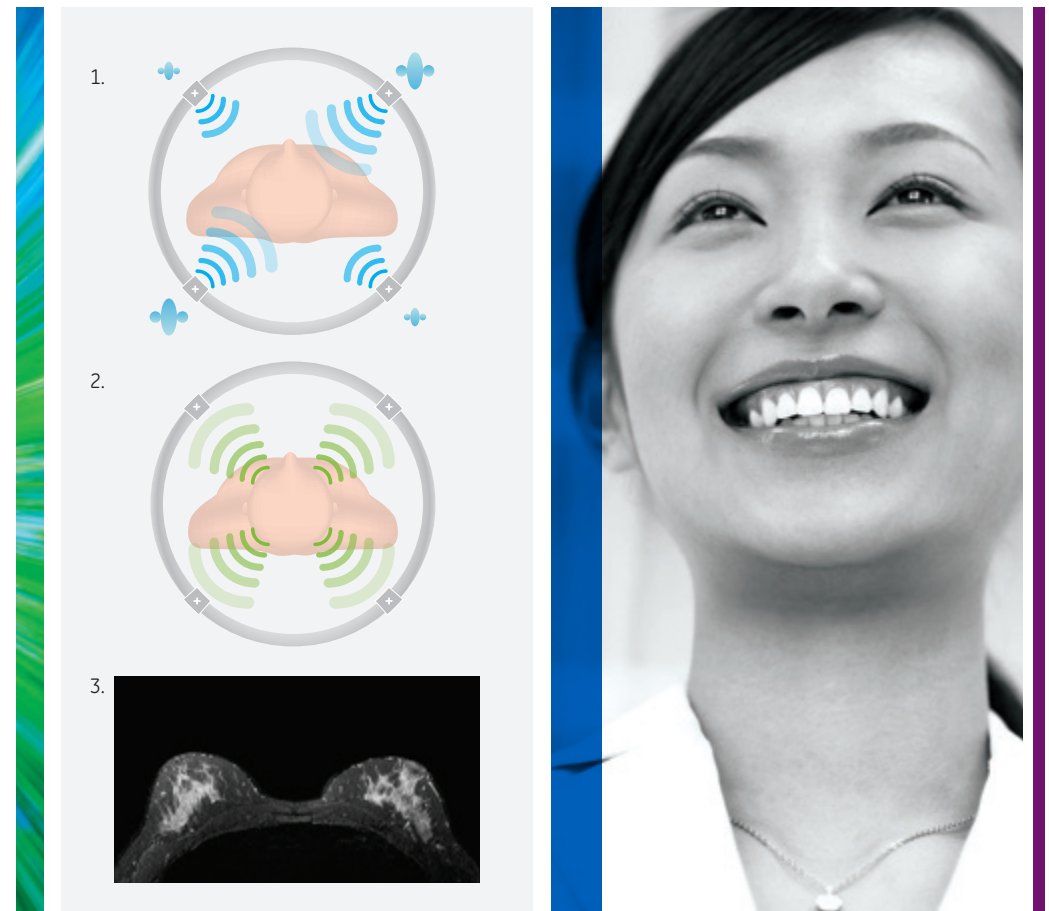
your Discovery™ MR750.

The Discovery MR750PLUS upgrade delivers improved image uniformity and consistency with our latest MultiDrive capabilities, allowing for exceptional body, breast and neuro imaging results. Our Integrated Coil solution combines the high performance head and neck coil with the latest advancement in torso coil design. This allows for 'eyes to thighs' imaging with no need to reposition your patient delivering a new level of capability for the Discovery MR750 platform.

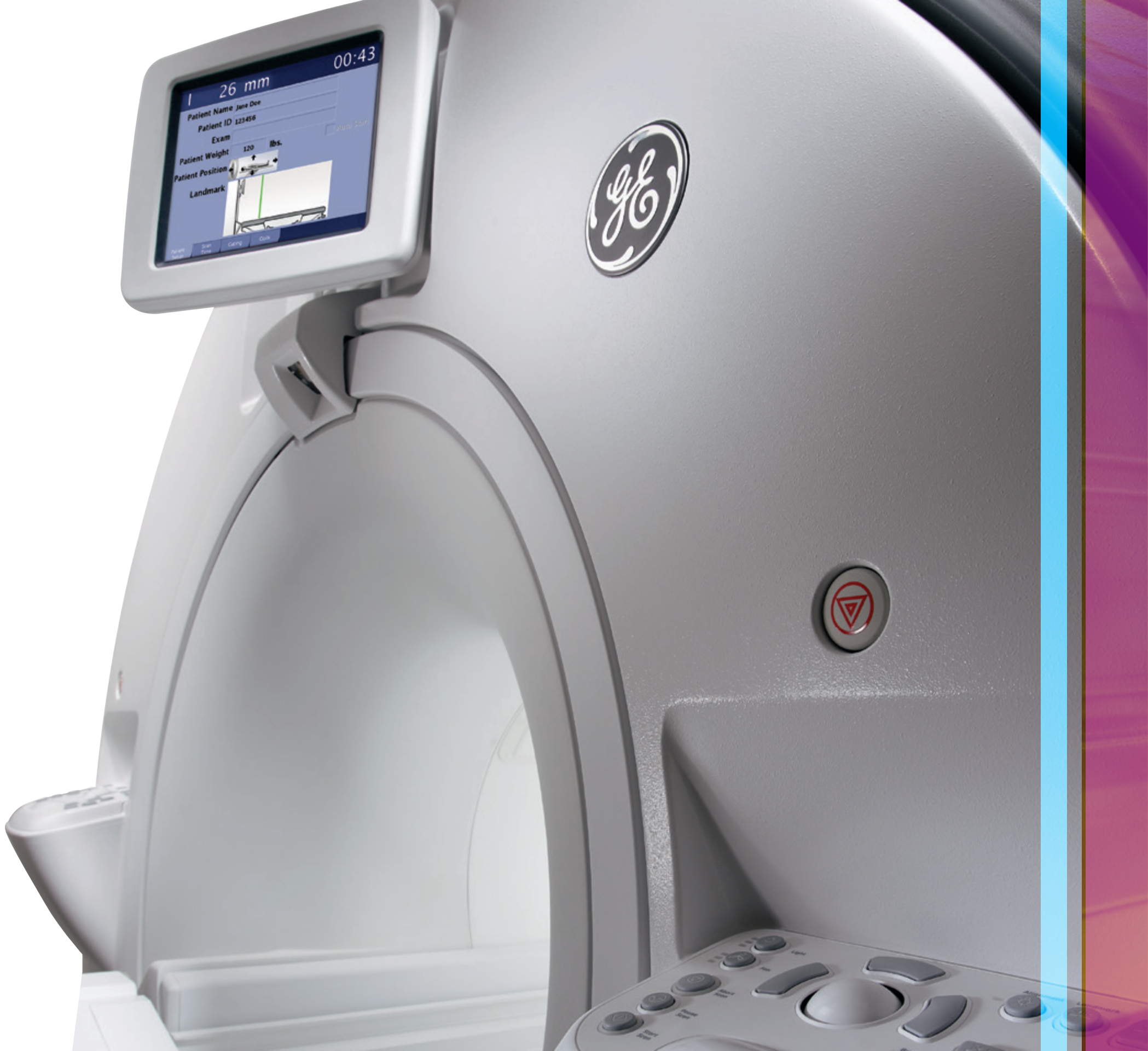
These hardware improvements combined with all of the latest applications, including the unique DISCO application, provide even higher spatial and temporal resolution imaging results. With 1.5 mm isotropic dynamic acquisitions in less than 4 seconds, the Discovery MR750PLUS truly supercharges what's possible with your MR.

MultiDrive for Discovery MR750 is 510(k) pending at FDA.
Not available for sale in the United States.

The content on MultiDrive is not for external use or
distribution in the United States.



1. MultiDrive ensures the RF and amplitude of each pulse are adapted for the anatomy of interest.
2. MultiDrive's RF modification produces uniform MR signal during reception.
3. MultiDrive automatically compensates and virtually eliminates B1-induced signal shading across different body shapes and sizes. The result is consistently clear and uniform images.



26 mm
00:43
Patient Name Jane Doe
Patient ID 123456
Exam
Patient Weight 120 lbs.
Patient Position
Landmark



About GE Healthcare

GE Healthcare provides transformational medical technologies and services that are shaping a new age of patient care. Our broad expertise in medical imaging and information technologies, medical diagnostics, patient monitoring systems, drug discovery, biopharmaceutical manufacturing technologies, performance improvement and performance solutions services help our customers to deliver better care to more people around the world at a lower cost. In addition, we partner with healthcare leaders, striving to leverage the global policy change necessary to implement a successful shift to sustainable healthcare systems.

Our "healthymagination" vision for the future invites the world to join us on our journey as we continuously develop innovations focused on reducing costs, increasing access and improving quality around the world. Headquartered in the United Kingdom, GE Healthcare is a unit of General Electric Company (NYSE: GE). Worldwide, GE Healthcare employees are committed to serving healthcare professionals and their patients in more than 100 countries. For more information about GE Healthcare, visit our website at www.gehealthcare.com.

GE Healthcare
3200 N. Grandview Blvd.
Waukesha, WI 53188
USA

¹ Discovery™ MR750, MR750w, and MR 450, and Optima™ MR450w and 450w GEM systems

² Silenz MRA is 3.0T only

Clinical images are courtesy of:

GIE IRM Creil, Creil, France

Morrison Hospital, Swansea, Wales

MVZ, Fürth, Germany

Hospital Saint Joseph, Paris, France

Triemli, Switzerland, MR750w GEM

Spectrum Medical Imaging, Sydney, Australia

Juntendo University, Japan



imagination at work

©2014 General Electric Company –All rights reserved.

General Electric Company reserves the right to make changes in specifications and features shown herein, or discontinue the product described at any time without notice or obligation.

GE, GE Monogram, imagination at work, Discovery, Optima and Continuum are trademarks of General Electric Company.